

## LIMITED WARRANTY

The Manufacturer warrants to the original consumer purchaser that this product as manufactured is free from defects in materials and workmanship. For a period of one (1) year from date of purchase by the original consumer purchaser, we will repair or replace, at our option, without charge for parts or labor incurred in replacing parts, any part which we find to be defective due to materials or workmanship. This Warranty is subject to the following limitations and exclusions.

1. This warranty does not apply to the engine. Please contact your nearest dealer where they will send the machine to the engine manufacturer.
2. Transportation charges for the movement of any power equipment unit or attachment are the responsibility of the purchaser. Transportation charges for any parts submitted for replacement under this warranty must be paid by the purchaser unless such return is requested by your dealer.
3. Battery Warranty: On products equipped with a Battery, we will replace, without charge to you, any battery which we find to be defective in manufacture, during the first ninety (90) days of ownership. After ninety (90) days, we will exchange the Battery, charging you 1/12 of the price of a new Battery for each full month from the date of the original sale. Battery must be maintained in accordance with the instructions furnished.
4. The Warranty period for any products used for rental or commercial purposes is limited to 90 days from the date of original purchase.
5. This Warranty applies only to products which have been properly assembled, adjusted, operated, and maintained in accordance with the instructions furnished. This Warranty does not apply to any product which has been subjected to alteration, misuse, abuse, improper assembly or installation, delivery damage, or to normal wear of the product.
6. Exclusions: Excluded from this Warranty are belts, blades, blade adapters, normal wear, normal adjustments, standard hardware and normal maintenance.
7. In case of any problem within the boundaries of this warranty, contact the nearest department store, indicate the model number, serial number and the date of purchase of your machine. This warranty does not apply to accidental damages. All implicit warranties are limited to the same time frames. Or contact:

E.M. Services  
54 Rue Lambrechts  
92400 Courbevoie  
France  
Telephone: (1) 46678078  
Fax: (1) 46678095

THIS WARRANTY DOES NOT APPLY TO INCIDENTAL OR CONSEQUENTIAL DAMAGES. ANY IMPLIED WARRANTIES ARE LIMITED TO THE SAME TIME PERIODS STATED HEREIN.

**WEED EATER®**



**REPAIR PARTS  
MANUAL  
MODEL NO. WEX125H42C  
Lawn Tractor**

---

**WEED EATER®**

# HOW TO USE THIS MANUAL

This manual is designed to provide the customer with a means to identify the parts on his/her tractor when ordering repair parts. The illustrations may or may not represent the actual assemblies; therefore, it is not recommended to use this manual as a guide to assemble or disassemble the tractor. Some hardware and parts are drawn larger in order to more readily identify them.

Each tractor has its own model number.

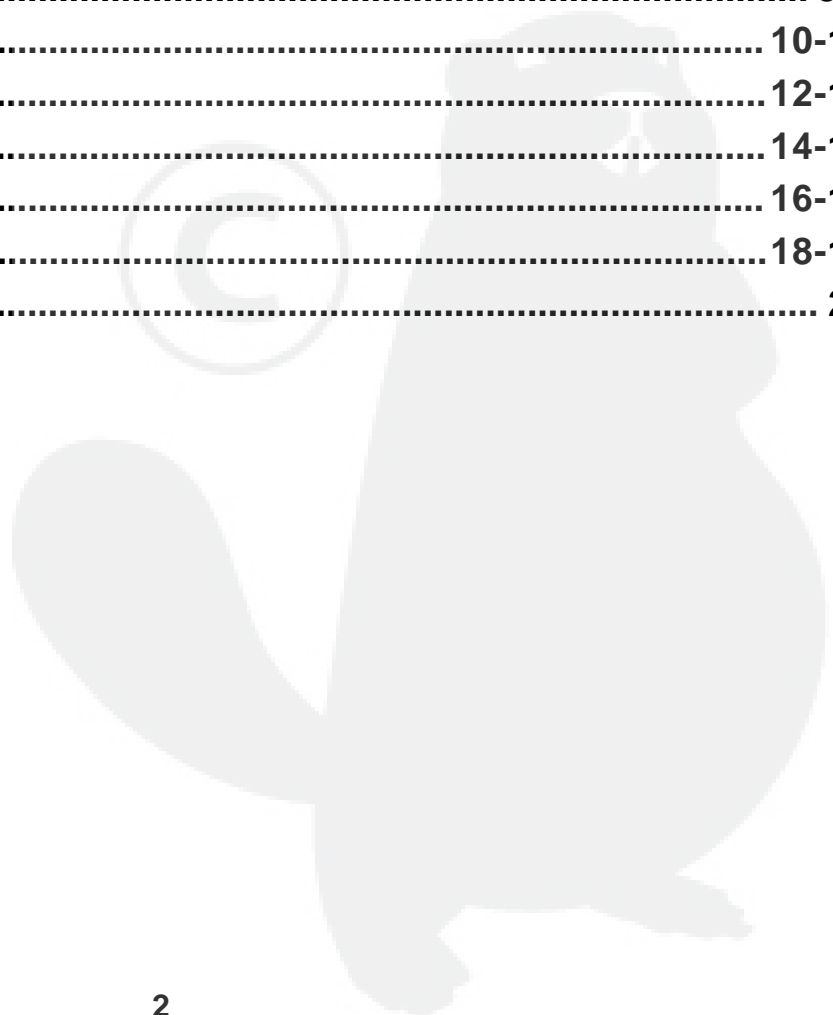
The model number for your tractor can be found on the fender under the seat.

When ordering parts, always give the following information:

- Product - "Tractor"
- Model Number - "WEX125H42C"
- Part Number
- Part Description

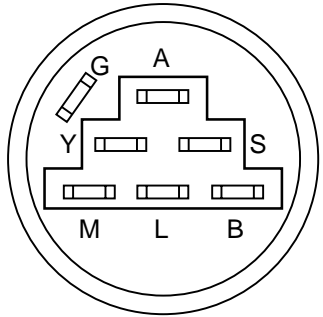
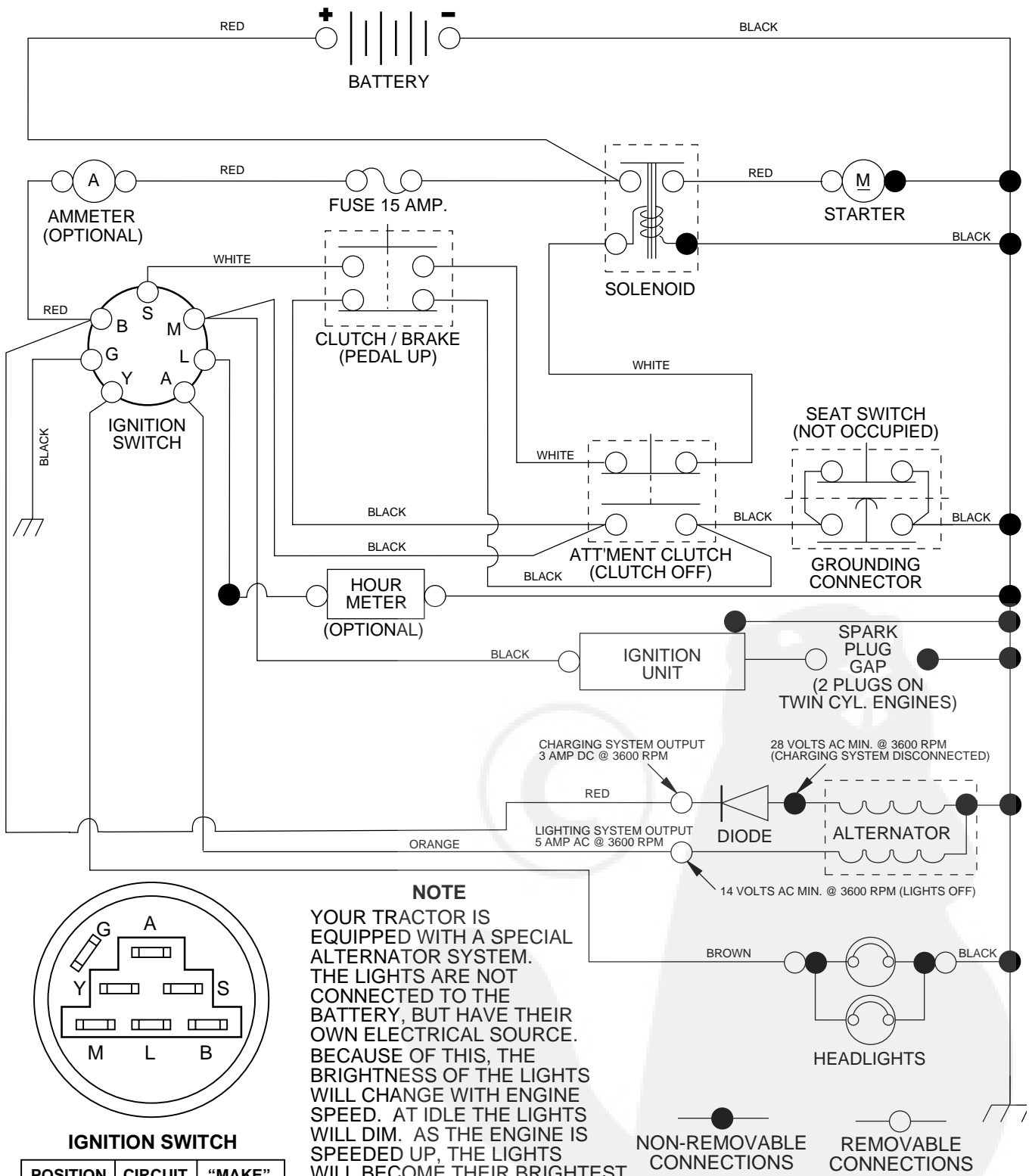
## TABLE OF CONTENTS

<b>SCHEMATIC</b> .....	<b>3</b>
<b>ELECTRICAL</b> .....	<b>4-5</b>
<b>CHASSIS</b> .....	<b>6-7</b>
<b>DRIVE</b> .....	<b>8-9</b>
<b>STEERING WHEEL</b> .....	<b>10-11</b>
<b>ENGINE</b> .....	<b>12-13</b>
<b>SEAT/DECALS</b> .....	<b>14-15</b>
<b>MOWER LIFT LEVER</b> .....	<b>16-17</b>
<b>MOWER DECK</b> .....	<b>18-19</b>
<b>WARRANTY</b> .....	<b>20</b>



# TRACTOR - - MODEL NUMBER WEX125H42C

## SCHEMATIC



**IGNITION SWITCH**

POSITION	CIRCUIT	"MAKE"
OFF	G + M + L	NONE
RUN/LIGHT	B + L	A + Y
RUN	B + L	NONE
START	B + L + S	NONE



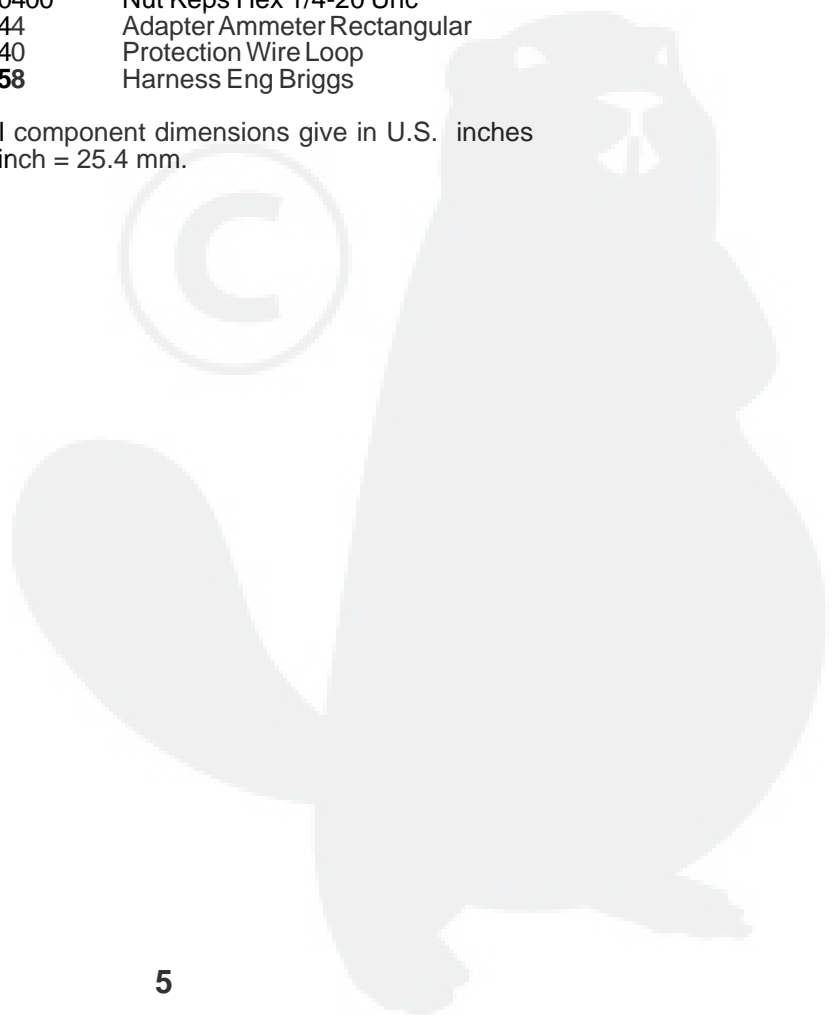
# REPAIR PARTS

## TRACTOR - - MODEL NUMBER WEX125H42C

### ELECTRICAL

KEY NO.	PART NO.	DESCRIPTION
1	144925	Battery 12 Volt 25 Amp
2	74760412	Bolt Hex Hd 1/4-20unc X 3/4
8	156417	Case Battery
16	153664	Switch Interlock Push-In
19	10090400	Washer Lock 1/4
20	73350400	Nut Jam Hex 1/4-20 Unc
21	<b>166181</b>	Harness Asm Light W/4152J
22	4152J	Bulb Light #1156
24	4799J	Cable Battery 6 Ga 11"red
25	146147	Cable Battery 6 Ga red W/ 16" Wire
26	<b>166180</b>	Fuse 15 AMP
27	73510400	Nut Keps Hex 1/4-20 Unc
28	4207J	Cable Ground 6 Ga 12" black
29	121305X	Switch Plunger Nc Gray
30	140301	Switch, Ignition
31	124211X	Nut Ignition
32	141226	Cover Sw Ignition
33	122147X	Key Ign
40	<b>166145</b>	Harness Ign
41	71110408	Bolt Blk Fin Hex 1/4-20 x 1/2
42	131563	Cover Terminal Red
43	145673	Solenoid
44	73640400	Nut Keps Hex 1/4-20 Unc
48	140844	Adapter Ammeter Rectangular
52	141940	Protection Wire Loop
70	<b>166658</b>	Harness Eng Briggs

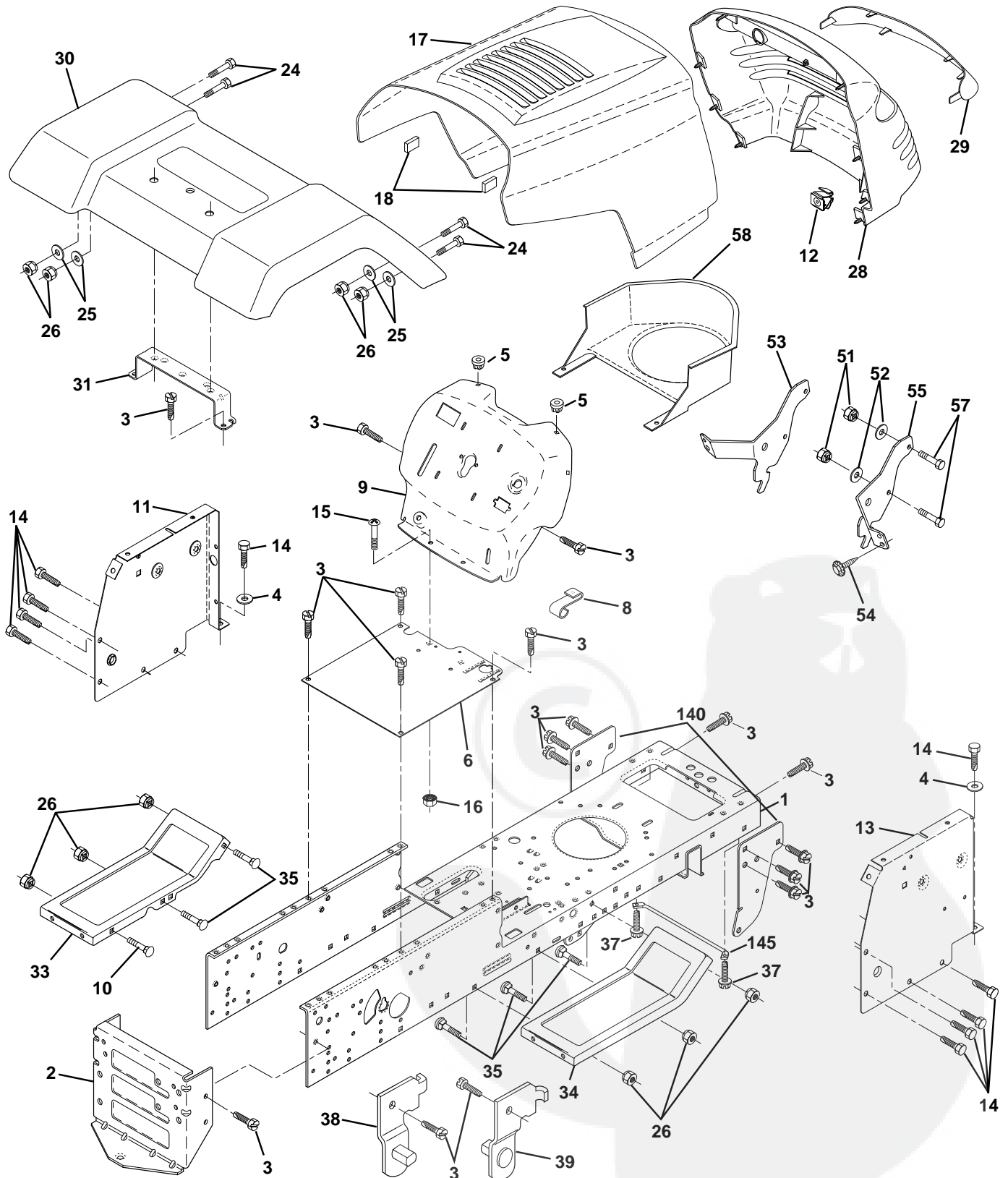
**NOTE:** All component dimensions give in U.S. inches  
1 inch = 25.4 mm.



# REPAIR PARTS

## TRACTOR - - MODEL NUMBER WEX125H42C

### CHASSIS AND ENCLOSURES



# REPAIR PARTS

## TRACTOR - - MODEL NUMBER WEX125H42C

### CHASSIS AND ENCLOSURES

KEY NO.	PART NO.	DESCRIPTION
1	<b>165480</b>	Chassis
2	140356	Drawbar
3	<b>17060612</b>	Screw 3/8-16 x 3/4
4	19131216	Washer 13/32 x 3/4 x 16 Gauge
5	155272	Bumper Hood/Dash
6	155923	Saddle
8	155138	Clip, Retainer Slide-On
9	161937X011	Dash
10	72140608	Bolt, Carriage 3/8-16 x 1
11	155927	Dashboard, panel LH
12	145660	Clip Tinnerman Grille P/L
13	155934X010	Dashboard, panel RH
14	17490608	Hex head tread rolling screw 3/8-16 x 1/2 Ty-tt
15	74180512	Machine screw 5/16-18 unc x 3/4
16	73510500	Nut, Keps 5/16-18 Unc
17	159639X550	Hood Pnt Stil P/L w/Trim 505
18	126938X	Bumper Hood
24	74780616	Bolt, Hex Head, Fin. 3/8-16 x 1 Grade 5
25	19131312	Washer 13/32 x 13/16 x 12 Gauge
26	73800600	Nut Lock Hex w/Ins. 3/8-16 Unc
28	157373	Grille
29	140273	Lens Grille
30	<b>166886X550</b>	Fender
31	136619	Fender Bracket
33	105476X550	Footrest, LH
34	105475X550	Footrest, RH
35	72110606	Bolt 3/8-16 X 3/4
37	17490508	Screw Thdrol 5/16-18 x 1/2
38	139886	Mower Pivot Bracket, LH
39	139887	Mower Pivot Bracket, RH
51	73800400	Nut Lock, w/Insert 14/20 UNC
52	19091416	Washer 9/32 x 7/8 x 16 Ga.
53	144697	Bracket Grille
54	161464	Screw Hex WsHd 8-18 x 7/8
55	144696	Bracket Grille RH
57	74780412	Bolt FinHex 1/4-20 UNC x .75
58	150127	Duct Air Engine P/L LT
140	158418	Bracket Suspension Front
145	156524	Rod Pivot Chassis/Hood
--	5479J	Button Plug

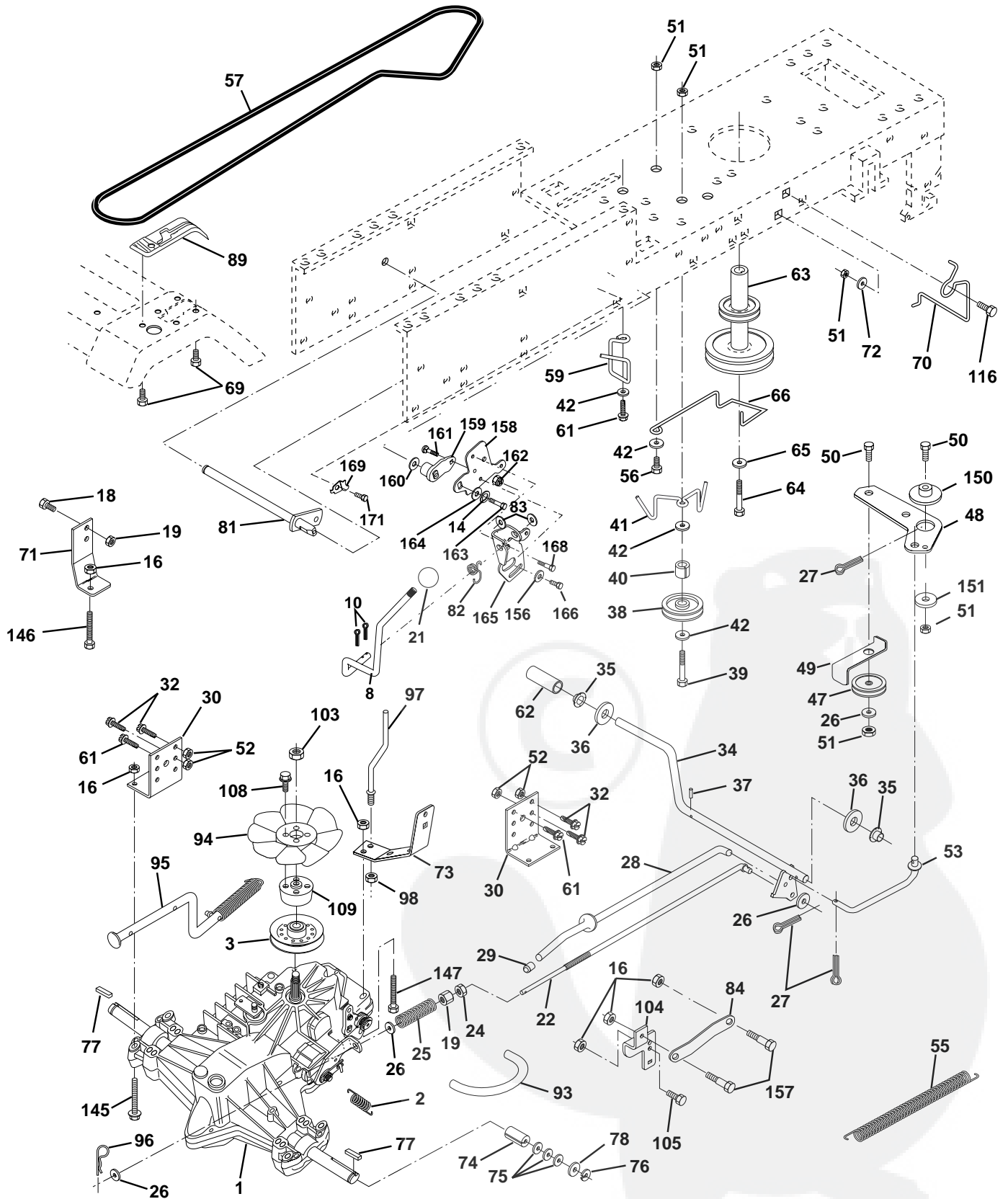
**NOTE:** All component dimensions given in U.S. inches  
1 inch = 25.4 mm



# REPAIR PARTS

## TRACTOR - - MODEL NUMBER WEX125H42C

### DRIVE



# REPAIR PARTS

## TRACTOR - - MODEL NUMBER WEX125H42C

### DRIVE

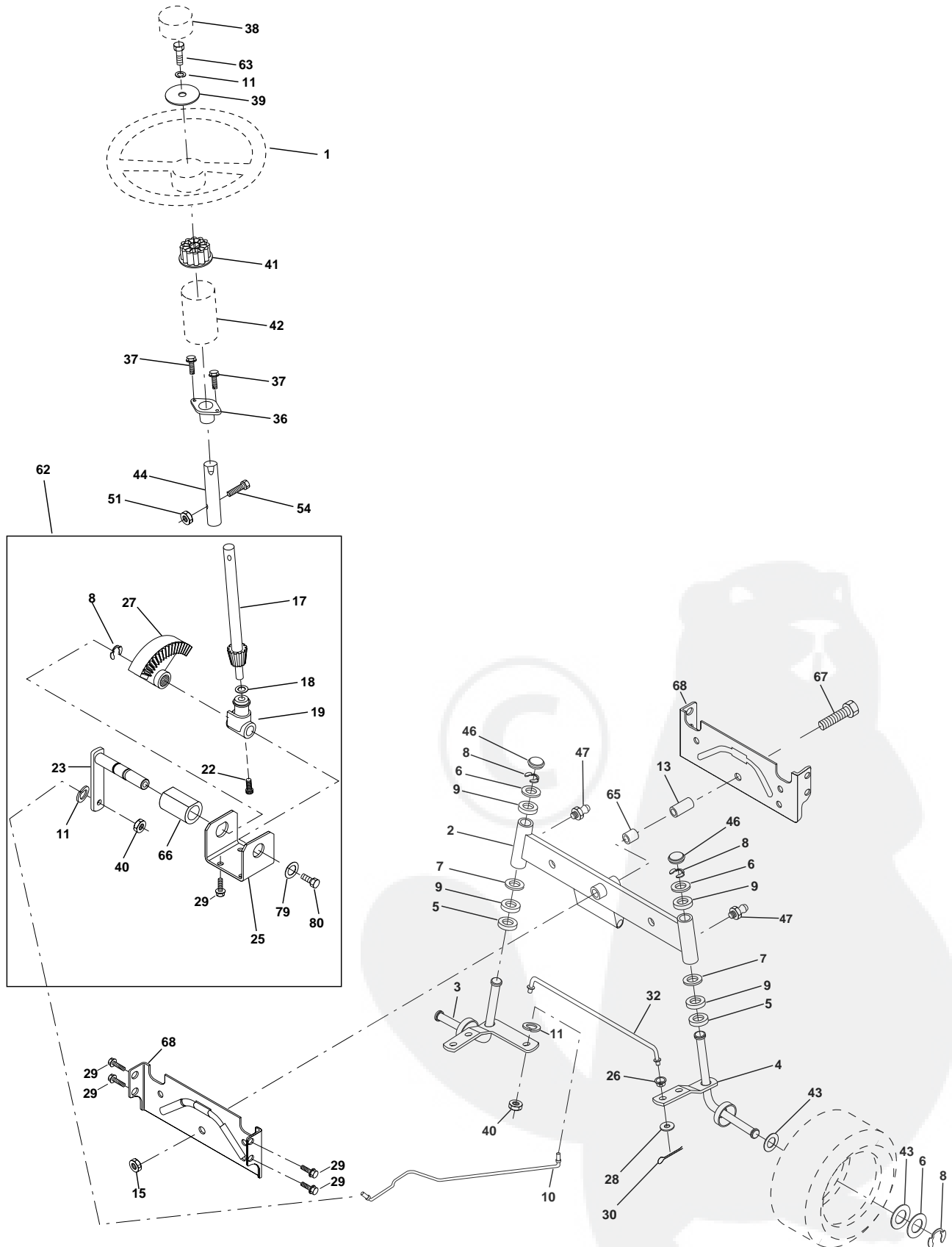
KEY NO.	PART NO.	DESCRIPTION	KEY NO.	PART NO.	DESCRIPTION
1	-----	Transaxle Hydro Gr 319-0500 (Order parts from transaxle manf.)	71	141417	Strap, Torque, Lh
2	142431	Spring, Return, Brake	72	19132012	Washer 13/32 x 1-1/4 x 12 Ga.
3	144698	Pulley, Transmission	73	141418	Strap, Torque, Rh
8	<b>165619</b>	Rod Shift Fender Adjust Lt	74	121199X	Spacer, Split
10	76020416	Pin, Cotter 1/8 x 1	75	121749X	Washer 25/32 x 1-1/4 x 16 Ga.
14	<b>10040400</b>	Washer Lock Hvy Helical	76	12000001	Ring, E
16	73800500	Nut, Lock Hex w/Ins 5/16-18 UNC	77	123583X	Key, Square
18	74780616	Bolt Hex 3/8-16 UNC x 1 Gr.5	78	121748X	Washer 25/32 x 1-5/8 x 16 Ga.
19	73800600	Nut, Lock Hex w/Wsh 3/8-16 UNC	81	<b>165595</b>	Shaft Asm Cross Tapered 0500
21	106933X	Knob Rd. 1/2-13 Plstc. Thds. Blk.	82	123782X	Spring, Torsion
22	145627	Rod, Brake	83	19171216	Washer 17/32 x 3/4 x 16 Ga.
24	73350600	Nut	84	<b>165816</b>	Link Transaxle Hydro 0500
25	106888X	Spring, Rod, Brake	89	164893X428	Console, Shift
26	19131316	Washer 13/32 x 13/16 x 16 Ga.	93	142564	Line Fuel
27	76020412	Pin, Cotter 1/8 x 3/4	94	140462	Fan 7"
28	145204	Rod, Parking Brake	95	<b>167696</b>	Control Asm Bypass Hydro
29	71673	Cap, Parking Brake	96	4497H	Spring, Retainer 1"
30	130807	Bracket, Transmission	97	144201	Keeper, Belt Rh
32	74760512	Bolt Hex 5/16-18 UNC x 3/4	98	73510600	Nut Keps 3/8-16 UNC
34	155071	Shaft, Foot Pedal	103	73940800	Nut, Hex Jam Toplock 1/2-20 UNF
35	120183X	Bearing, Nylon	104	141421	Arm, Control Pump 500 Hydro
36	19211616	Washer	105	71070516	Bolt, Head Hex 5/16 x 18 x 1
37	1572H	Pin, Roll	106	74780520	Bolt H 5/16-18 UNC x 1-1/4
38	131494	Pulley, Idler, Flat	108	17541026	Screw Hex Wh Hd #10-24 x 1-5/8
39	74760644	Bolt	109	145098	Adaptor Fan Hydro Lt Hyd Alum
40	4470J	Spacer, Split	116	72110610	Bolt Rdhd Sq Neck 3/8-16 x 1-1/4
41	165838	Keeper, Belt, Idler	145	74490540	Bolt Hex Flghd 5/16-18 Gr. 5
42	19131312	Washer 13/32 x 13/16 x 12 Ga.	146	74490536	Bolt Hex 5/16-18 UNC x 1-1/2
47	127783	Pulley, Idler, V-Belt	147	74490524	Bolt Hex 5/16-18 x 2-1/4
48	154407	Asm, Bell Crank	150	<b>165850</b>	Bushing Bellcrank Grd Dr
49	123205X	Retainer, Belt	151	19133210	Washer 13/32 x 2 x 10
50	74760624	Bolt	156	<b>166002</b>	Washer Srrted 5/16ID x 1.125
51	73680600	Nut	157	<b>153236</b>	Bolt Shoulder 5/16-18 Unc - 2A
52	73680500	Nut Crownlock 5/16-28	158	<b>165589</b>	Bracket Shift Mount
53	105710X	Link, Clutch	159	<b>165494</b>	Hub Tapered Flange Shift Lt
55	105709X	Spring, Return, Clutch	160	<b>19292016</b>	Washer 29/32 x 1-1/4 x 16 Ga.
56	74760620	Bolt, Hex 3/8-16 UNC x 1-1/4	161	<b>72140406</b>	Bolt Rdhd Sqnk 1/4-20 x 3/4 Gr. 5
57	141416	V-Belt, Drive	162	<b>73680400</b>	Nut Crownlock 1/4-20 Unc
59	140312	Keeper, Belt, Center	163	<b>74780416</b>	Bolt Hex Fin 1/4-20 Unc x 1Gr. 5
61	<b>17060612</b>	Screw 3/8-16 x 3/4	164	<b>19091010</b>	Washer 5/8 x .281 x 10 Ga.
62	8883R	Cover, Pedal	165	<b>165623</b>	Bracket Pivot Lever
63	140186	Pulley, Engine	166	<b>166880</b>	Screw 5/16-18 x 5/8
64	71170764	Bolt Hex 7/16 x 4 Gr. 5	168	<b>165492</b>	Bolt Shoulder 5/16-18 x .561
65	10040700	Washer	169	<b>165581</b>	Plate Fastening Lt
66	154778	Keeper, Belt Engine Flproof	171	<b>17490608</b>	Screw Thdrol 3/8-16 x 1/2 Ty-Tt
69	142432	Screw			
70	134683	Guide, Belt, Mower Drive RH			

**NOTE:** All component dimensions given in U.S. inches  
1 inch = 25.4 mm

# REPAIR PARTS

## TRACTOR - - MODEL NUMBER WEX125H42C

### STEERING WHEEL



# REPAIR PARTS

## TRACTOR - - MODEL NUMBER WEX125H42C

### STEERING WHEEL

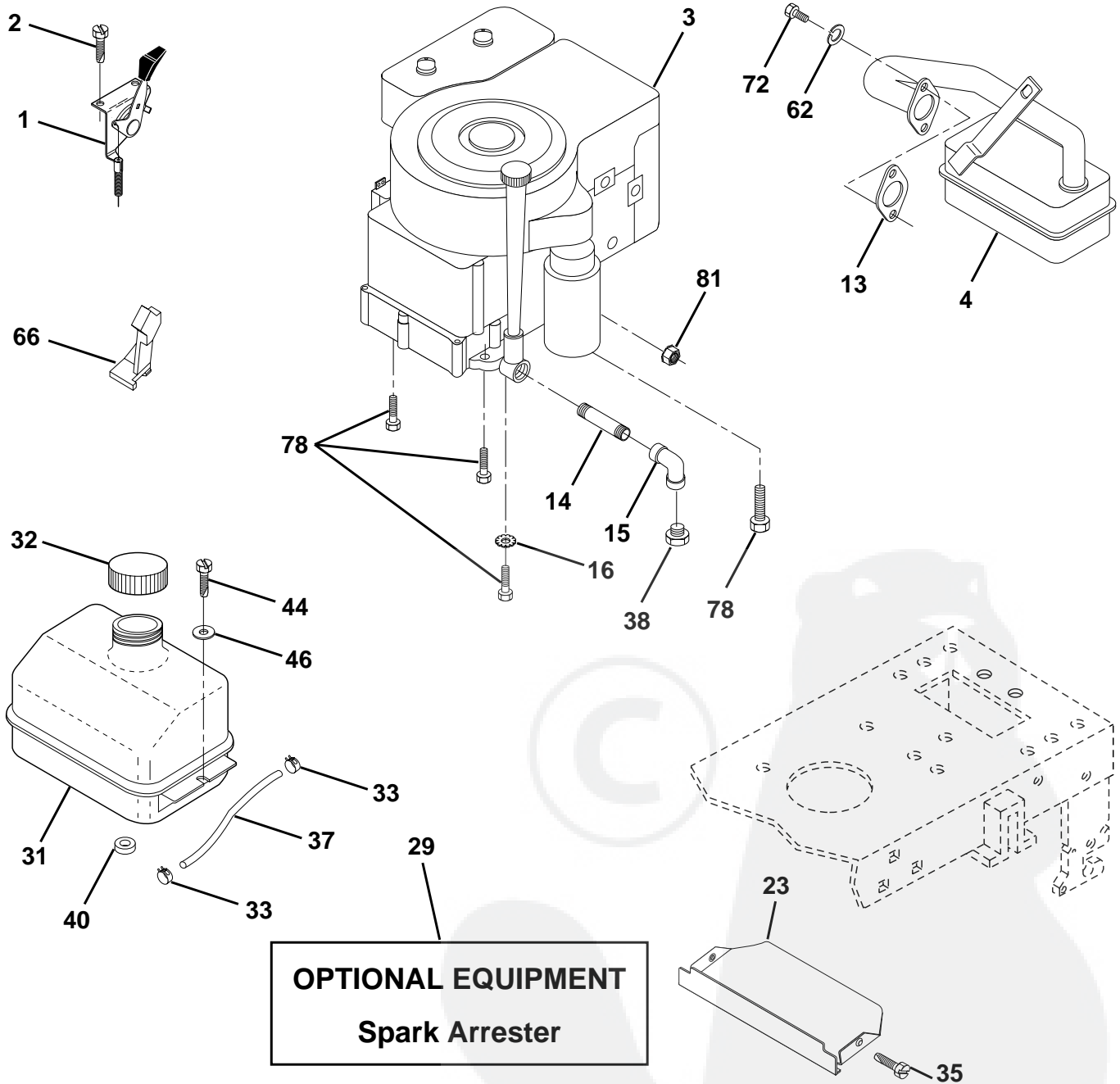
KEY NO.	PART NO.	DESCRIPTION
1	140044	Wheel, Steering
2	154427	Asm. Axle, Rear
3	156483	Asm., Spindle, Lh
4	157473	Asm., Spindle, Rh
5	6266H	Bearing, Thrust, Hardened
6	121748X	Washer 25/32 x 1-5/8 x 16 Ga.
7	19272016	Washer 27/32 x 1-1/4 x 16 Ga.
8	12000029	Ring, Clip
9	3366R	Bearing
10	156438	Link, Drag
11	10040600	Washer, Lock
13	154779	Bearing, Axle
15	73901000	Nut, Jam Hex w/Washer Insert 5/8-11 UNC
17	156546	Asm. Shaft, Steering
18	57079	Washer, Thrust .515 x .750 x .033
19	<b>160395</b>	Support, Shaft
22	<b>165857</b>	Screw, Hex Wshhd Torx
23	<b>165851</b>	Shaft Asm Pittman
25	154406	Bracket, Steering
26	126847X	Bushing, Link, Drag
27	136874	Gear, Sector
28	19131416	Washer 13/32 x 7/8 x 16 Ga.
29	<b>17060612</b>	Screw 3/8-16 x 3/4
30	76020412	Pin, Cotter
32	130465	Rod, Tie
36	155099	Bushing, Steering
37	152927	Screw
38	140045	Insert, Steering
39	<b>19133812</b>	Washer 13/32 x 2-3/8 x 12 Ga.
40	7810H	Nut
41	100711L	Adapter, Steering
42	<b>145054X428</b>	Boot, Shaft Steering Blk
43	121749X	Washer 25/32 x 1-1/4 x 16 Ga.
44	153720	Extension Shaft Steering LR.LT
46	121232X	Cap, Spindle
47	6855M	Fitting, Grease
51	73800500	Nut Lock Hex w/Ins. 5/16-18 UNC
54	74780520	Bolt Fin Hex 5/16-18 UNC x 1-1/4
62	<b>167902</b>	Kit, Steering Asm, Service
63	74780616	Bolt, FinHex 3/8-16 UNC x 1 Gr. 5
65	154780	Spacer Axle
66	154404	Bearing Arm Pittman
67	74781044	Bolt, FinHex 5/8-11 UNC x 2-3/4
68	154429	Axle, Brace
79	<b>19132012</b>	Washer 13/32 x 1-1/4 x 12 Ga.
80	<b>74950612</b>	Bolt Hex Nylon 3/8-16 x 3/4

**NOTE:** All component dimensions given in U.S. inches  
1 inch = 25.4 mm

# REPAIR PARTS

TRACTOR - - MODEL NUMBER WEX125H42C

## ENGINE



# REPAIR PARTS

## TRACTOR - - MODEL NUMBER WEX125H42C

### ENGINE

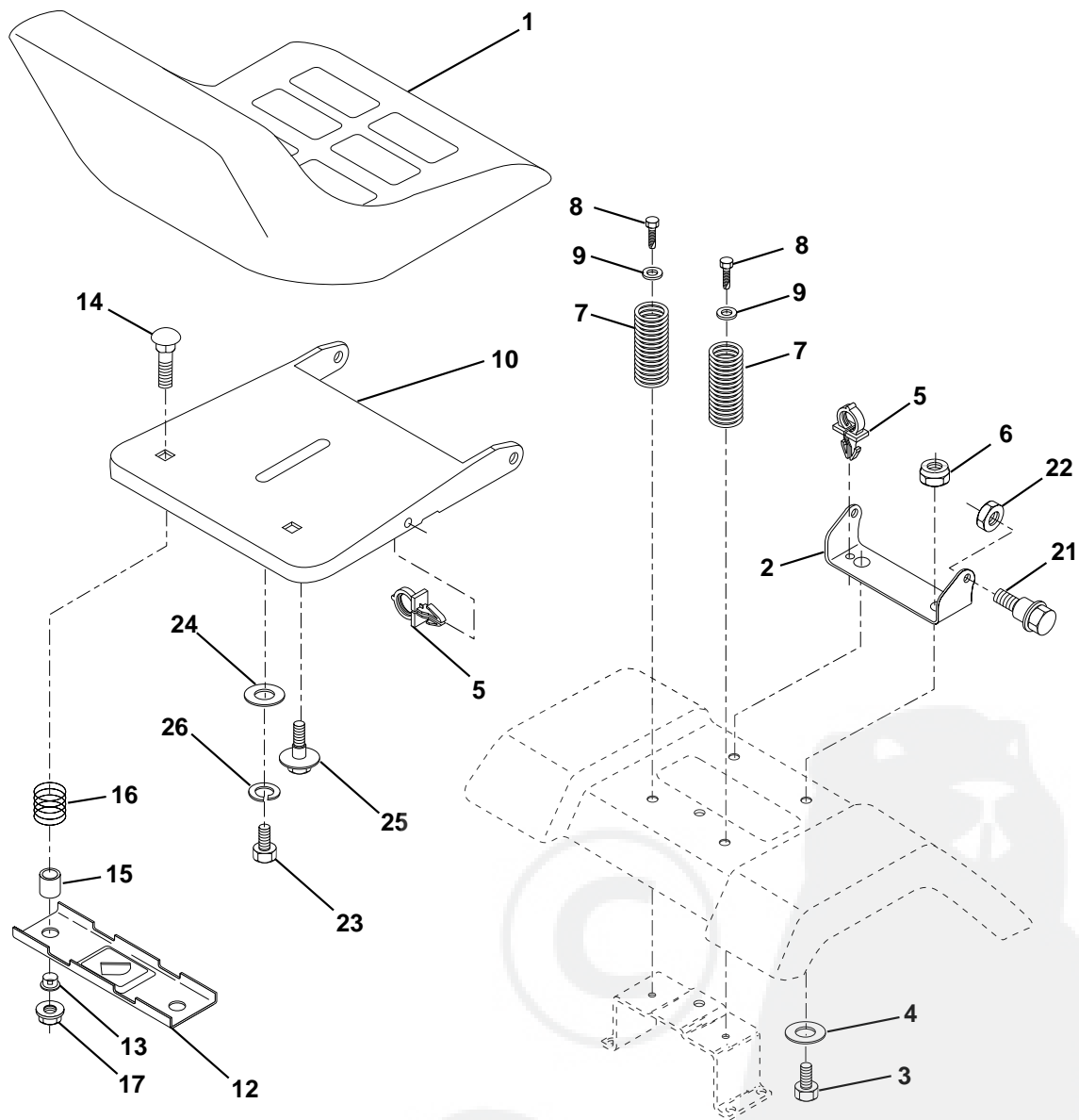
KEY NO.	PART NO.	DESCRIPTION
1	141359	Control Th/ch 20 22 LH Flg EEC
2	17720410	Screw Hex Thd Cut 1/4-20x5/8 T
3	-----	Engine Briggs 289707 (Order parts from engine manufacturer)
4	137348	Muffler Exhaust B&S
13	156291	Gasket Eng
14	13280324	Nipple Pipe 3/8 Npt X 3"
15	13200300	Elbow Std 90 Degree 3/8-18 Npt
16	11050600	Washer Lock Ext Tooth 3/8
23	159880	Shield Brn/Dbr Guard
29	137180	Kit Spark Arrestor (Flat Scrn)
31	109202X	Tank Fuel Front 2 00
32	140527	Cap Asm Fuel
33	123487X	Clamp Hose Blk
35	<b>17060512</b>	Screw 5/16-18 x 3/4
37	137040	Line Fuel
38	-----	Plug Oil Drain (Order From Engine Manufacturer)
40	124028X	Bushing Snap Nyl Blk Fuel Line
44	17490412	Screw Hexwsh Thdrol 1/4-20x3/4
46	19091416	Washer 9/32 X 7/8 X 16 Ga
62	10040500	Washer 5/16
66	127951	Stop Throttle 3000 RPM
72	71070512	Screw 5/16-18 x 3/4
78	<b>17060620</b>	Screw 3/8-16x1-1/4
81	128861	Nut Flange 1/4-20 Starter Nut

**NOTE:** All component dimensions given in U.S. inches.  
1 inch = 25.4 mm.

# REPAIR PARTS

## TRACTOR - - MODEL NUMBER WEX125H42C

### SEAT



KEY NO.	PART NO.	DESCRIPTION
1	127428	Seat
2	140551	Bracket, Pivot, Seat
3	74760616	Bolt
4	19131610	Washer 13/32 x 1 x 10 Ga.
5	145006	Clip, Push-in
6	73800600	Nut
7	124181X	Spring, Seat
8	<b>17060616</b>	Screw 3/8-16 x 1-1/2
9	19131614	Washer 13/32 x 1 x 14 Ga.
10	155925	Pan, Seat
12	121246X	Bracket, Mounting, Switch, Seat
13	121248X	Bushing, Nylon

KEY NO.	PART NO.	DESCRIPTION
14	72050412	Nut, Crownlock 1/4-20 x 1-1/2
15	134300	Spacer, Split
16	121250X	Spring
17	123976X	Nut, Lock, Flange 1/4 Gr. 5
21	153236	Bolt, Shoulder 5/16-18 UNC
22	73800500	Nut
23	74780814	Bolt Fin Hex 1/2 - 13 x 7/8 Gr. 5
24	19171912	Washer 17/32 x 1-3/16 x 12 Ga.
25	127018X	Bolt Shoulder 5/16-18 x .62
26	10040800	Washer Lock Hvy Hclic Spr 1/2

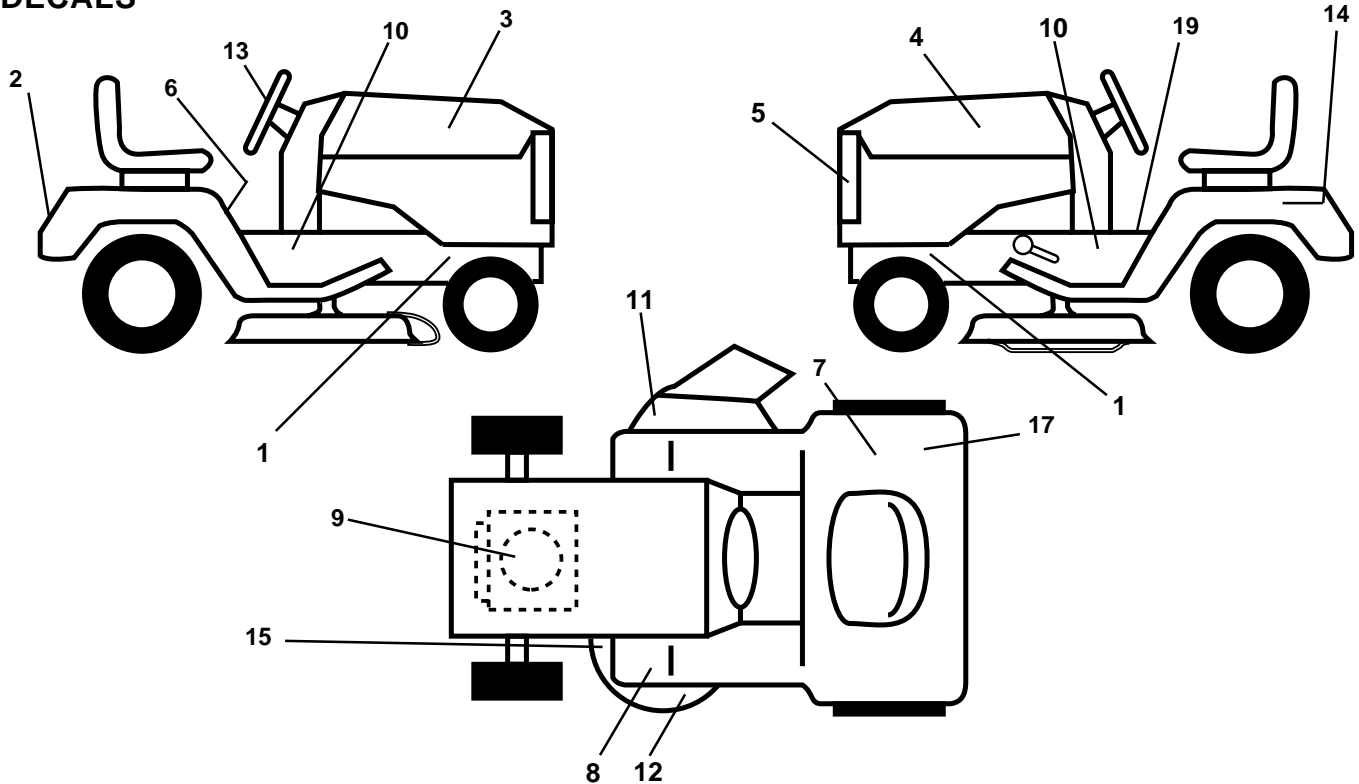
**NOTE:** All component dimensions given in U.S. inches  
1 inch = 25.4 mm



# REPAIR PARTS

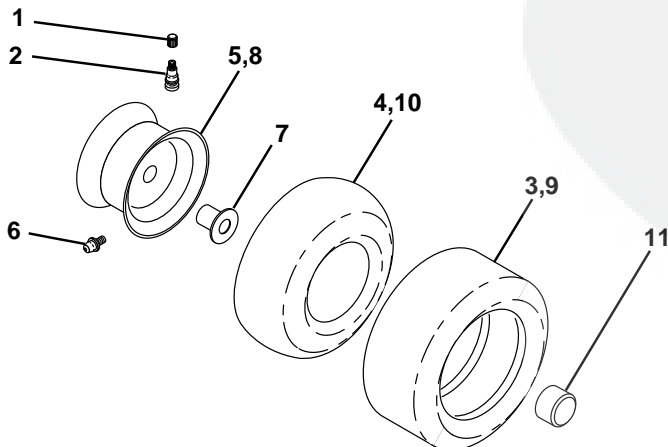
## TRACTOR - - MODEL NUMBER WEX125H42C

### DECALS



KEY NO.	PART NO.	DESCRIPTION	KEY NO.	PART NO.	DESCRIPTION
1	159736	Decal, Chassis Hot Muffler	15	160396	Decal, V-Belt
2	162395	Decal, Fender Logo	17	126187X	Decal, 100 DBA
3	162389	Decal, Hood Rh	19	140837	Decal, Parking Brake
4	162390	Decal, Hood Lh	--	<b>169210</b>	Decal, By-Pass Lt Hydro
5	162392	Decal, Grill	--	138311	Decal, Handle, Lift, Height Adjust (Lift Handle)
6	145498	Decal, Read Owner's Manual Syms	--	162598	Decal, Drawbar Load Limit
7	145437	Decal, Europe Stand CE	--	<b>168367</b>	Manual, Operator's (European)
8	159737	Decal, Brake/Clutch Symbol LT	--	<b>168368</b>	Manual, Operator's (Scand)
9	165313	Decal, HP Engine	--	<b>168369</b>	Manual, Repair Parts
10	163449	Decal Chassis 38"	Accessories not included with your tractor:		
11	145494	Decal, Mower Cutfinger Symbol	--	C42	Grass Catcher
12	162391	Decal, Deck	--	MK42	Mulching Kit
13	162398	Decal Wheel Steering	--	C342	3 Bin Bagger
14	145005	Decal, Battery Dan/Poi P/L Symbols			

### TIRES AND WHEELS



KEY NO.	PART NO.	DESCRIPTION
1	59192	Cap, Valve
2	65139	Stem, Valve
3	106222X	Tire Front
4	59904	Tube, Front (not furnished)
5	106732X427	Rim, Asm. Front
6	278H	Grease Fitting (rear tire only)
7	9040H	Bearing, Flange (front tire only)
8	106108X427	Rim, Asm. Rear
9	124635X	Tire, Rear
10	7152J	Tube, Rear (not furnished)
11	104757X	Cap, Axle
--	144334	Sealant, Tire (10 oz. Tube)

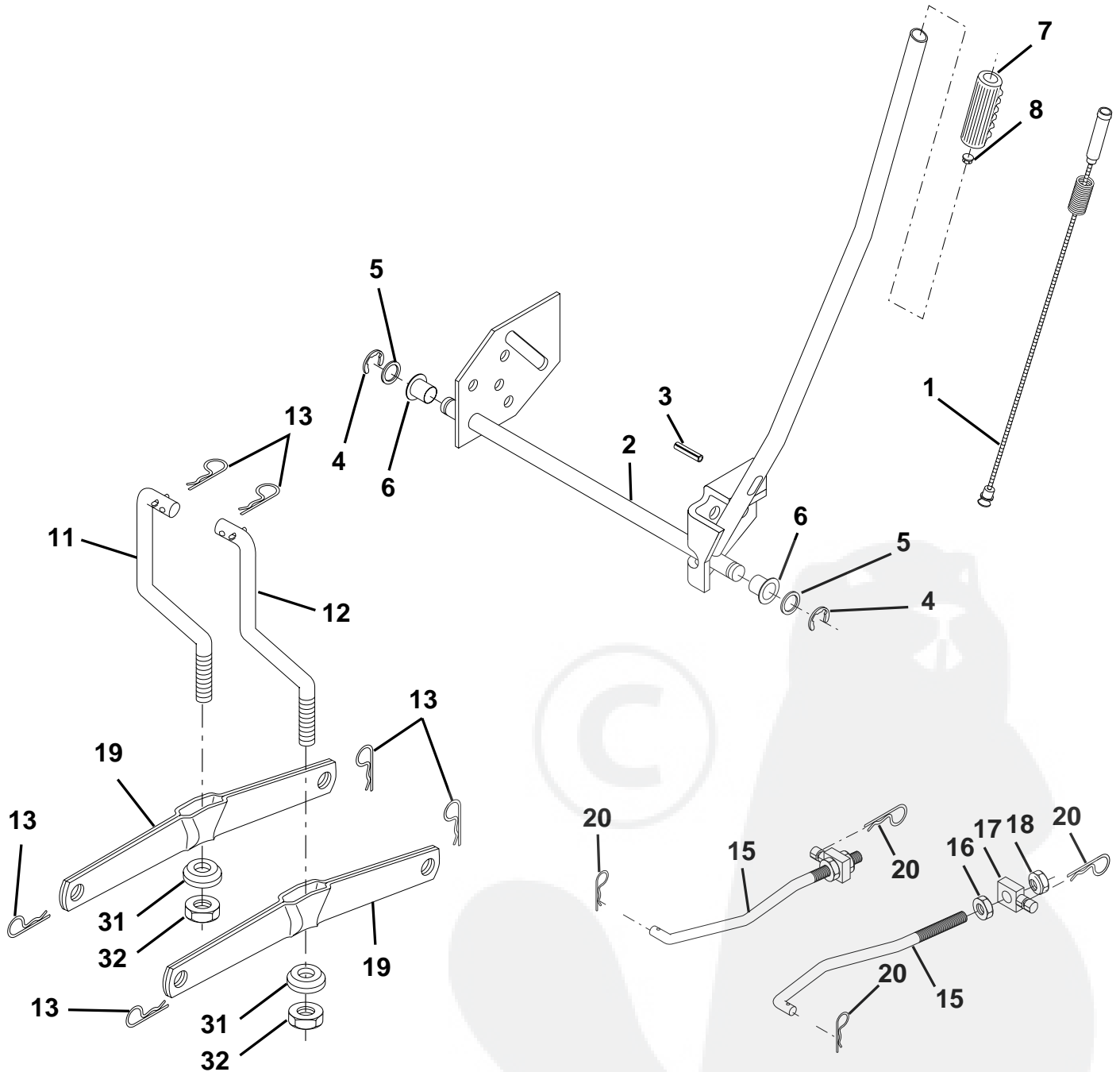
**NOTE:** All component dimensions given in U.S. inches  
1 inch = 25.4 mm



# REPAIR PARTS

TRACTOR - - MODEL NUMBER WEX125H42C

## MOWER LIFT



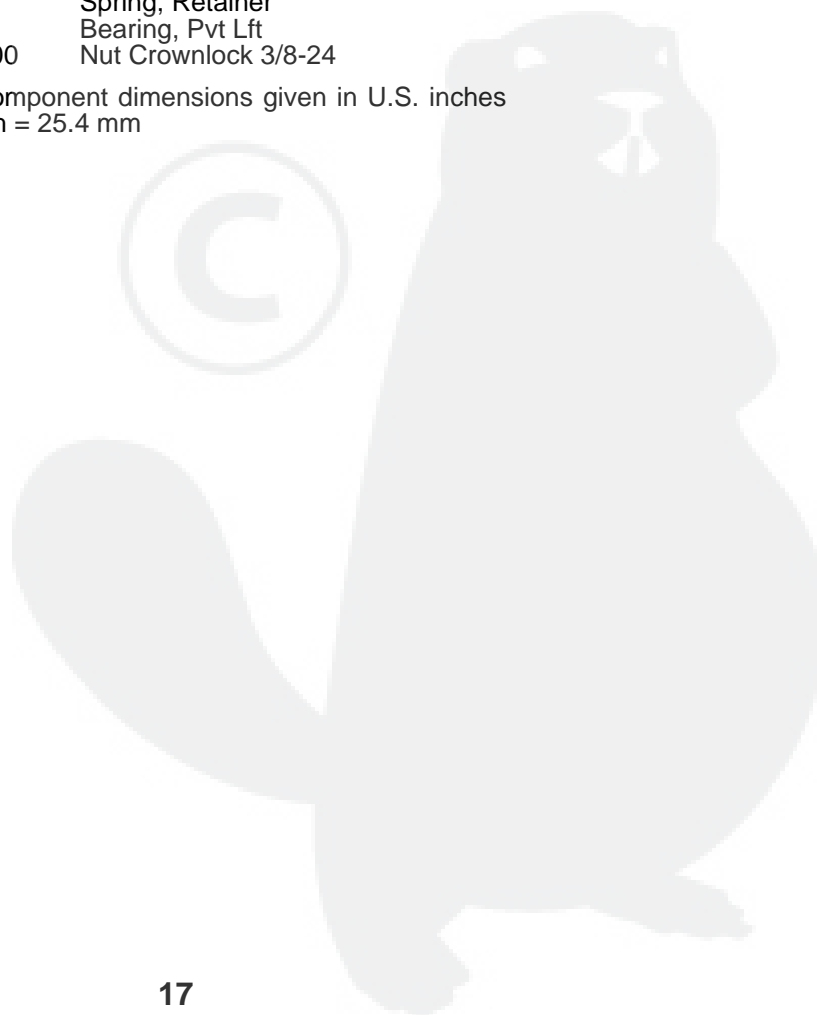
# REPAIR PARTS

## TRACTOR - - MODEL NUMBER WEX125H42C

### MOWER LIFT

KEY NO.	PART NO.	DESCRIPTION
1	159460	Asm. Inner Wire w/Plunger
2	159471	Asm., Shaft, Lift
3	105767X	Pin, Groove
4	12000002	Ring, E #5133-62
5	19211621	Washer 21/32 x 1 x 21 Ga.
6	120183X	Bearing, Nylon
7	109413X	Grip Handle Bicycle Matte Blk
8	124526X	Button, Plunger
11	139865	Link, Lift, Lh
12	139866	Link, Lift, Rh
13	4939M	Spring, Retainer
15	127218	Link, Front
16	73350800	Nut, Jam, Hex 1/2-13 Unc
17	130171	Trunnion
18	73800800	Nut, Lock w/washer 1/2-13 Unc
19	139868	Arm, Suspension, Rear
20	163552	Spring, Retainer
31	140302	Bearing, Pvt Lft
32	73540600	Nut Crownlock 3/8-24

**NOTE:** All component dimensions given in U.S. inches  
1 inch = 25.4 mm





# REPAIR PARTS

## TRACTOR - - MODEL NUMBER WEX125H42C

### MOWER DECK

KEY NO.	PART NO.	DESCRIPTION	KEY NO.	PART NO.	DESCRIPTION
1	164961	Housing Asm MWR 42"	52	139888	Bolt Shoulder 5/16-18 Unc Blkz
2	72140506	Bolt Rdhd Sqnk 5/16-18unc X3/4	53	131845	Arm Asm Pad Brake
3	138017	Bracket Asm Fr Sway Bar 38/42	54	133943	Washer Hardened
4	138440	Bracket Asm Deck 42"sway Bar	55	155046	Arm Idler 42" mower
5	4939M	Retainer Spring	56	<b>165723</b>	Spacer Retainer Mower
6	130832	Arm Suspension Rear	58	140086	Spring Torsion Brakes 42"
8	850857	Bolt 3/8-24x1 25 Gr8 Patched	59	141043	Guard TUV Idler
9	10030600	Washer Lock Hvy 3/8 Unplated	67	162132	Knob Rd 7/16-14 Pastic Thds Blk
10	140296	Washer Hard Blade Mower Vented	68	144200	V-Belt Mower
11	138498	Blade Mower 42" High Lift	71	142427	Rod Clutch Primary 38/42
12	129895	Bearing Ball #6204 (Mandrel)	72	131870	Spring Return
13	137645	Shaft Asm W/lower Bearing	73	127847	Arm Clutch Secondary
14	128774	Housing Mandrel Vented(machd)	74	121748X	Washer 25/32 X 1-5/8 X 16 Ga
15	110485X	Bearing Ball Mandrel	75	12000029	Ring Klip #t5304-75
16	140329	Stripper Mower Round	76	128903	Bolt Shoulder 3/8-16 Unc 1 44
17	72110610	Bolt Rdhd Sqnk 3/8-16 X 1.25	77	127845	Keeper Spring 4 000
18	72140505	Bolt Carr 5/16-18 X 5/8	78	160570	Arm Clutch Primary
19	132827	Bolt Shoulder	79	127498	Bushing 747 Od X 794 Lg Brass
20	159770	Baffle Vortex 42	80	153701	Spring Clutch Mower
21	73680500	Nut Crown Lock 5/16-18	81	73350600	Nut Hex Jam 3/8-16
22	134753	Stiffener Bracket 42"deck	82	142028	Trunnion Adj.
23	131267	Bracket Deflector Mower 42"	83	120958X	Washer Sintered
24	105304X	Cap Sleeve 80x 112 Blk Mower	84	156084	Keeper Belt Idler
25	123713X	Spring Torsion Deflector 2 52	85	72140620	Bolt Rdhd Sq 3/8-16 UNC x2-1/2 "Gr. 5
26	110452X	Nut Push Phos & Oil	92	73800600	Nut Lock Hex w/Ins 3/8-16 UNC
27	130968	Shield Deflector Mower 42" Blk	111	155197	Bracket Guage Wheel LH
28	19111016	Washer 11/32 X 5/8 X 16 Ga	112	155198	Bracket Guage Wheel RH
29	131491	Rod Hinge 42"6 75 Wlg	113	<b>17060512</b>	Screw 5/16-18 x 3/4
30	157722	Screw Thdrol Washer Hd	114	73510500	Nut Keps 5/16-18 UNC
31	129963	Washer Spacer Mower Vented	115	72110504	Bolt Carr 5/16-UNC x 1/2
32	153535	Pulley Mandrel 42/44/50"	116	4898H	Bolt SHLD
33	137266	Nut 9/16top Lock Flng	117	105455X	Wheel Guage Blk Narrow
34	72110614	Bolt Rdhd 3/8-16uncx1-3/4 Gr5	118	73930600	Nut Centerlock 3/8-16
35	133835	Fastner Christmas Tree	119	19121414	Washer 3/8 x 7/8 x 14 Ga.
36	131494	Pulley Idler Flat 3 060	120	19171512	Washer 17/32 x 15/16 12 Ga.
37	19131316	Washer 13/32 x 13/16 x 16 Ga.	121	143723	Bracket Extruded Guage Wheel
40	73680600	Nut Crownlock 3/8-16 Unc	128	153390	Washer Felt
41	133551	Rod Pivot W/nibs	132	19132203	Washer 13/32 x 1-3/8 x 3 Ga.
43	140083	Rod Clutch Secondary W/nibs	141	6266H	Wasehr Thrust .75 x 1.230
44	140088	Guard Mandrel LH Black	--	130794	Mandrel Assembly (Includes Key Numbers 8-10, 12-15, 31 and 33)
45	4497H	Spring Retainer 1" Zinc/cad	--	164962	Deck, Std (Complete)
46	137729	Screw Hex Thd Cut 1/4-24 UNC			
48	133944	Washer Hardened Smaller			
49	155066	Roller Asm Cam Follower 42"dec			
50	131340	Bolt Shldr 10-24 Zinc Gr 5 42"			
51	69180	Nut Lock #10-24 Unc			

**NOTE:** All component dimensions given in U.S. inches  
1 inch = 25.4 mm