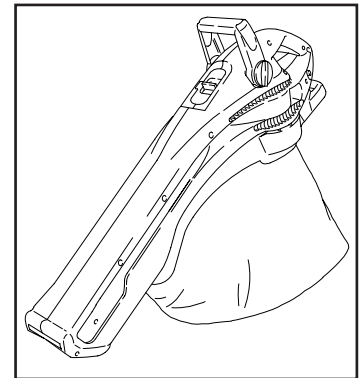
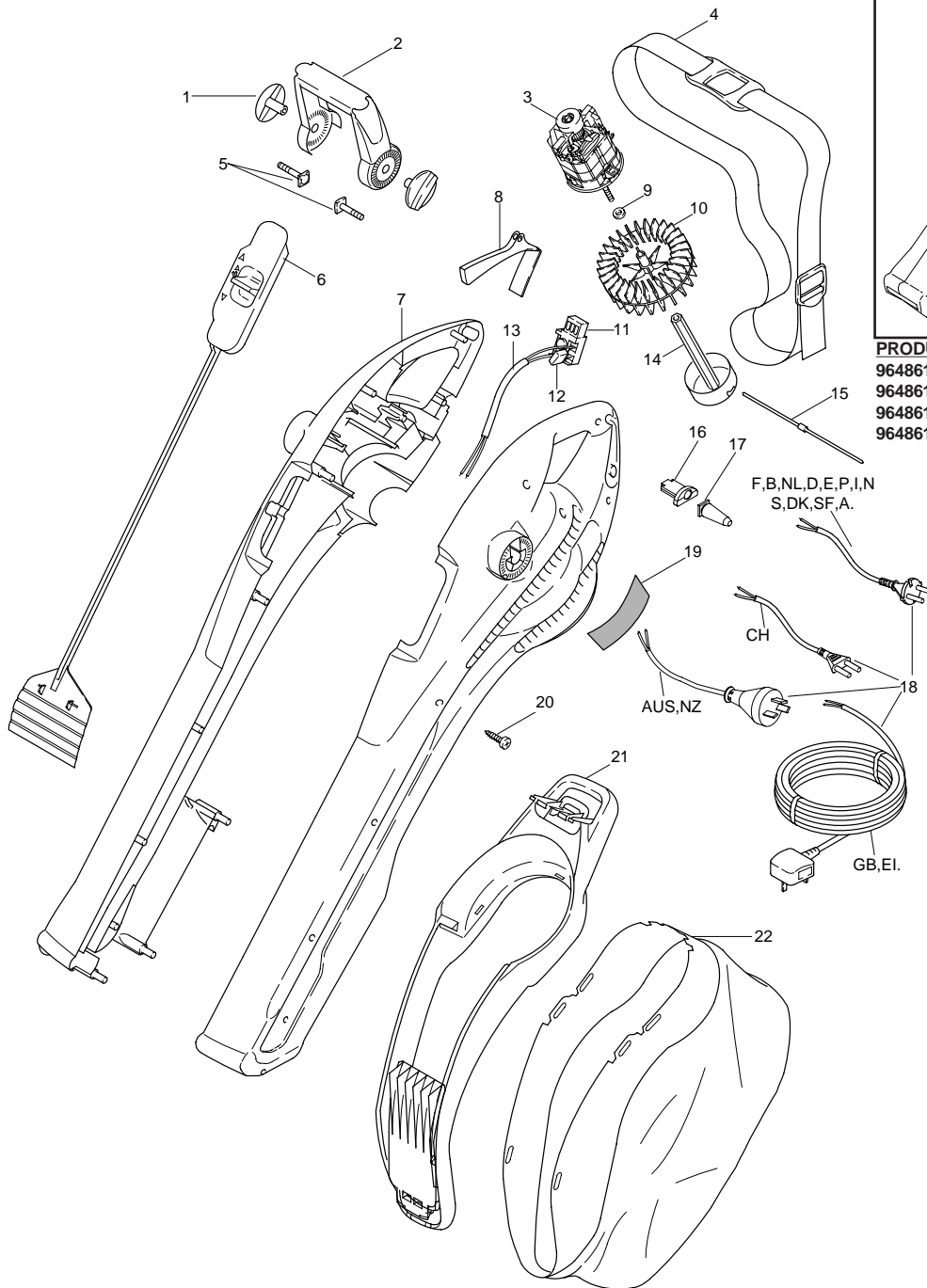



THIS PARTS LIST REPLACES 5195936-00
PARTS LIST

PRODUCT APPLICATION

9648611-01 GB.
 9648611-22 CH.
 9648611-86 F,B,NL,D,E,P,I,N,S,DK,SF,A.
 9648611-99 AUS,NZ.

F,B,NL,D,E,P,I,N
 S,DK,SF,A.

CH

AUS,NZ

GB,EI.

Key	Part Number	Description	Qty	Key	Part Number	Description	Qty
01	5127577-68/1	WING KNOB	2	13	5138179-01/4	INTERNAL LEAD	1
02	5118099-68/7	FRONT HANDLE	1	14	5118016-68/1	CUTTING HEAD	1
03	5150041-00/1	MOTOR	1	15	5149555-00/4	CUTTING FILAMENT	10
04	5149457-00/3	STRAP	1	16	5117528-00/9	CABLE RETAINER	1
05	5148859-01/9	BOLT	2	17	5149370-00/8	PROTECTION SLEEVE	1
06	5106674-68/1	VALVE MECHANISM	1	18	5127251-03/0	MAINS CABLE	1 GB,EI.
07	5149382-01/1	CLAMSHELLS, PAIR	1		5147000-02/9	MAINS CABLE	1 F,B,NL,D,E,P,I,N,DK,S,SF,A.
08	5127579-68/7	SWITCH ACTUATOR	1		5147000-03/7	MAINS CABLE	1 CH.
09	5149164-00/5	WASHER	1		5138330-00/5	MAINS CABLE	1 AUS,NZ.
10	5118017-67/1	FAN	1	19	5138370-00/1	LABEL WARNING	1
11	5137685-00/3	SWITCH	1 GB,EI.	20	5146672-00/0	SCREW	12
	5138403-00/0	SWITCH	1 CH,F,B,NL,D,E,P,I,N,DK,S,SF,A.	21	5149532-01/1	BAG FRAME & FLAP	1
12	5148397-01/0	CAPACITOR	1	22	5106675-00/1	DEBRIS BAG	1