

brand **Flymo**

date **14.02.2003** Sheet **1/2**

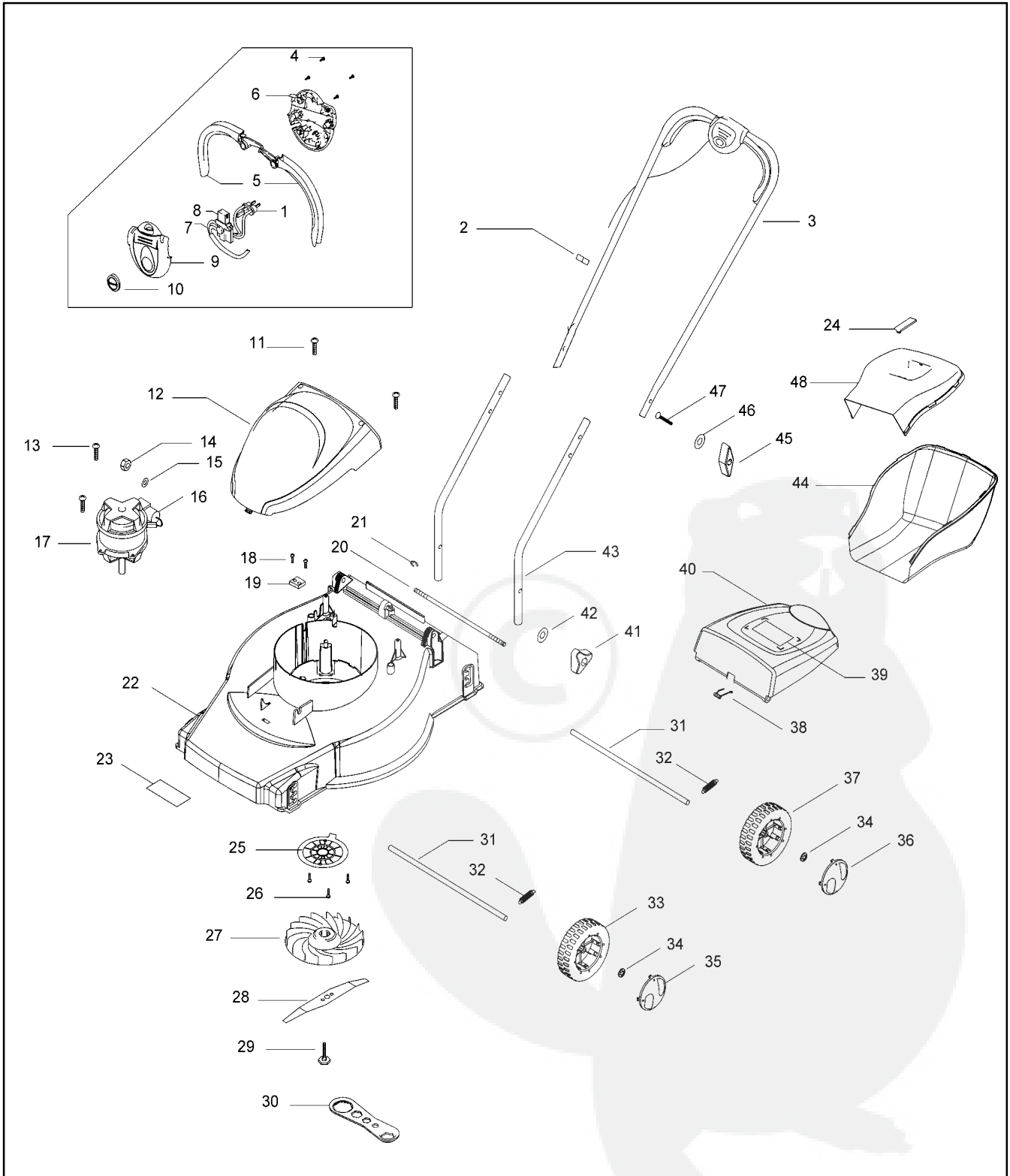
Publication No. **AP0302004**

Model

RE 330

Product Number

9643203-62



brand	Flymo
-------	-------

date	14.02.2003	Sheet 2/2
------	------------	-----------

RE 330

pos	Part No	Description	Qty	pos	Part No	Description	Qty
1	5138563-00/1	Pin retainer	1	37	5119445-67/3	Wheel	2
2	5138574-00/8	Clip-cable	2	38	5312061-39/2	Spring safety flap	1
3	5127712-00/7	Handle upper	1	39	5138587-00/0	Label warning	1
4	5130873-00/2	Screw	4	40	5119397-64/3	Safety flap	1
5	5119459-64/1	Lever switchbox	2	41	5119565-00/9	Wing knob	2
6	5119458-68/4	Switchbox lower	1	42	5140266-03/1	Washer	2
7	5107118-00/1	Kit Lead internal	1	43	5119470-68/9	Handle lower	2
8	5130504-00/3	Switch	1	44	5107066-68/9	Grassbox lower	1
9	5119456-68/8	Switchbox Upper	1	45	5119563-00/4	Wing knob	2
10	5131030-64/4	Lock off button	1	46	5140266-00/7	Washer	2
11	5149753-01/3	Screw	2	47	5149198-01/1	Bolt	2
12	5119396-64/5	Motor cover	1	48	5107064-68/4	Grassbox upper	1
13	5130974-00/8	Screw	2				
14	5149106-00/6	Nut	1				
15	5139099-00/5	Toothlock washer	1				
16	5131107-06/1	Capacitor motor	1				
		Leroy Somer					
	5131107-05/3	Capacitor motor	1				
		Memaf					
17	5119534-00/5	Motor	1				
18	5149753-01/3	Screw	2				
19	5140705-00/4	Cable clamp	1				
20	5131038-00/1	Tie rod	1				
21	5131041-00/5	E-clip	1				
22	5107061-68/0	Deck	1				
23	5131058-01/7	Label model	1				
24	5130980-67/4	Handle grassbox	1				
25	5128194-68/4	Finger protection plate	1				
26	5149753-01/3	Screw	3				
27	5119495-00/9	Impeller	1				
28	5119494-00/2	Blade	1				
29	5131064-00/7	Blade bolt	1				
30	5312103-61/6	Spanner	1				
31	5130971-00/4	Axle	2				
32	5312049-74/4	Spring	2				
33	5119447-67/9	Wheel	2				
34	5149679-00/2	Washer starlock	4				
35	5119448-64/4	Hub cap	2				
36	5119446-64/8	Hub cap	2				