



PIÈCES DÉTACHÉES

Tondeuse Autoportée

EZT2042F

Avertissement !

Lire et comprendre le présent manuel dans son intégralité avant d'utiliser cette machine ou de procéder à son entretien et à son contrôle.

Conserver ce manuel avec soin afin de pouvoir le consulter pour l'utilisation, l'entretien, ou le contrôle de cette machine.



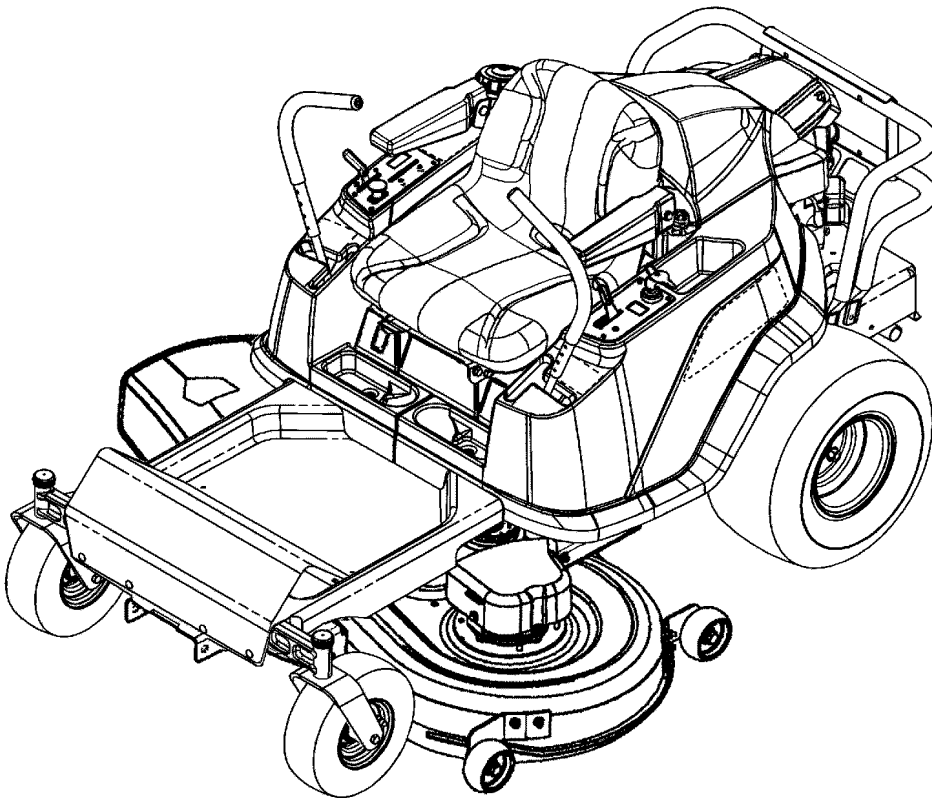
BÉAL, MES CHOIX NATURE

Parts Manual for

SNAPPER®

EUROPEAN HYDRO DRIVE ZTR 42" (106.7 cm) 285Z

<i>Model No.</i>	<i>Description</i>
2691043-00	EZT2042
2691043-01	EZT2042

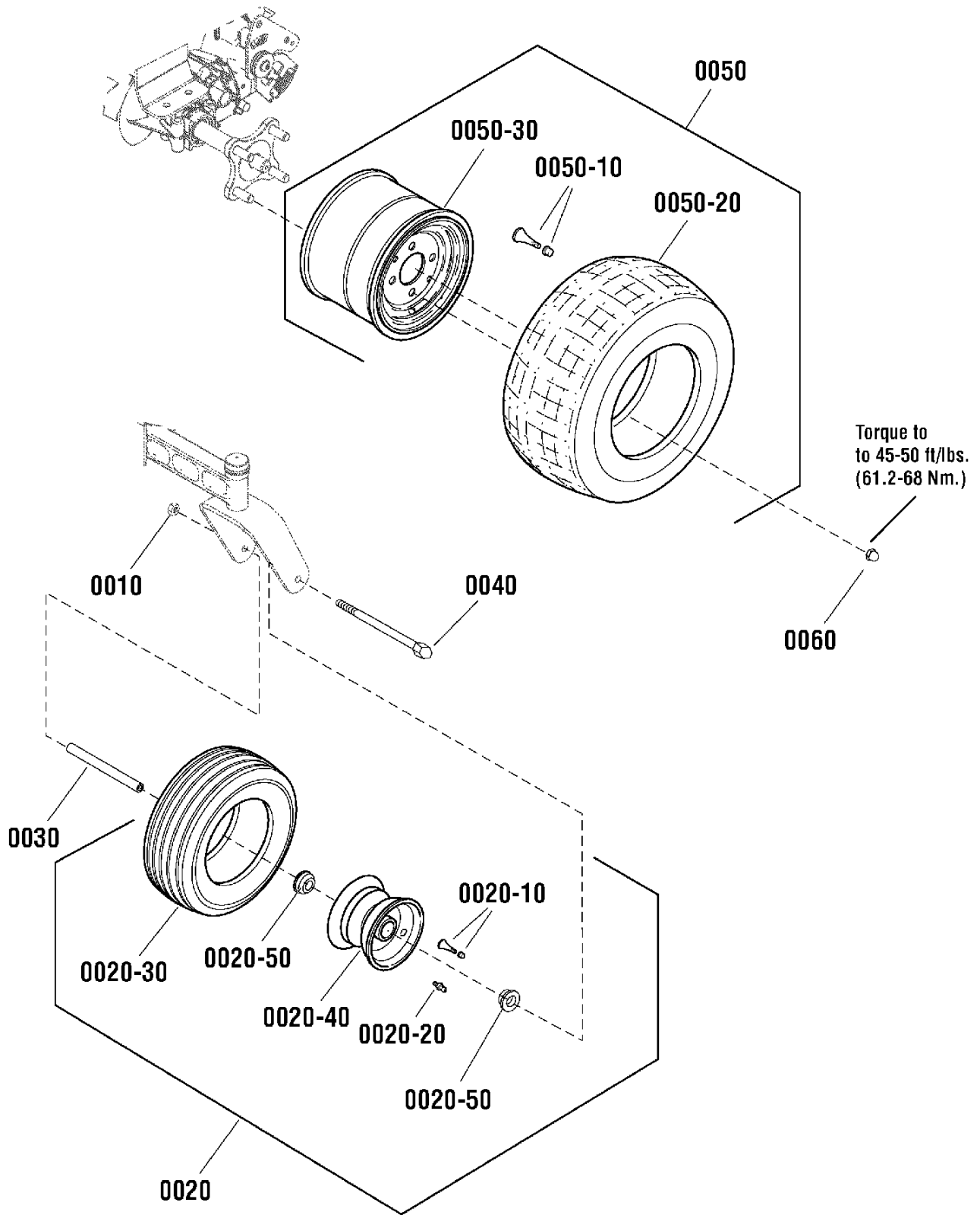


Briggs & Stratton Yard Power Products Group

535 Macon Road
McDonough, GA, 30253 U.S.A.
800-935-2967

Manual No. 7105980
Revision: - 9/11/2012

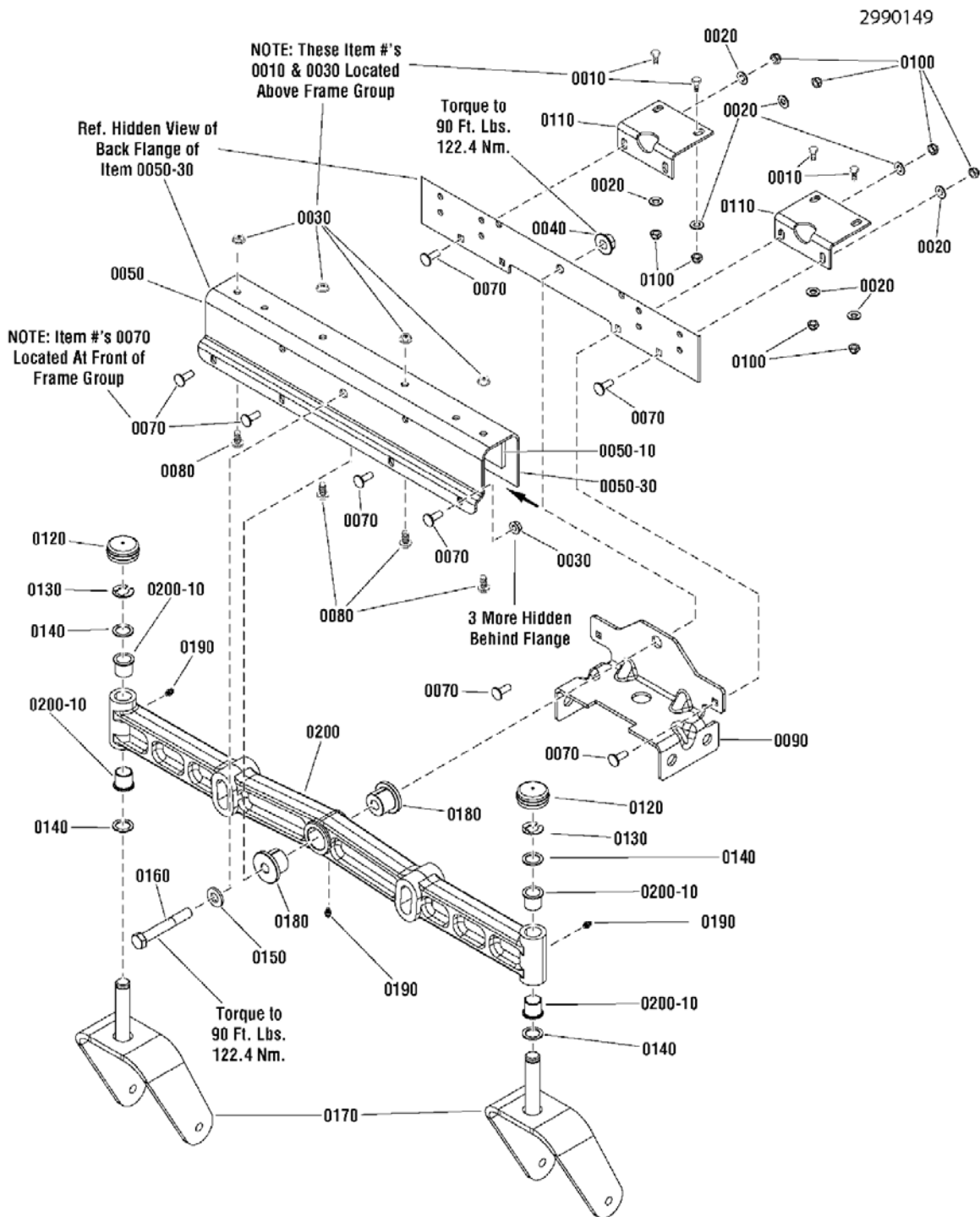
PAGE	GROUP
4	Tire Group
6	Front Axle Group, Cast Iron, No Susp.
8	Frame, Footrest, & Two Bar Bumper Group
10	Seat, Body & Fuel Tank Group
14	LH Controls Group
16	RH Controls Group
18	Parking Brake Group
20	Transmission & Carrier Group
22	Engine Group
24	Deck Lift Group, EHOC, Frame Hung
28	Clutch & Support Group, 42" FH
30	42" Deck Housing & Arbor Group, Export
32	French Guard Group - Frame & 42" Deck
34	Decals Group
36	Electrical Group, No Hour Meter
38	Wiring Schematic



Item	Part No	Qty	Description
0010	7090839	2	NUT, 7/16-14 Hex Center Lock, GR 5, ZP
0020	1734013	2	ASSEMBLY, Wheel & Tire, Front Caster
0020-10	2172353	1	VALVE STEM & CAP
0020-20	7104428	1	ZERK, Grease, 8M x 1, 45 Degree
0020-30	1734875	1	TIRE, 11 x 4.00 - 5
0020-40	1734876	1	WHEEL RIM, 3.00 Wide 5.00 Dia. 0.625 ID Bushings
0020-50	1739281	2	BUSHING, 5/8 ID Short
0030	1734841	2	TUBE, Caster Wheel, 0.625 OD 4.53 OLG 0.625 OD
0040	7091772	2	SCREW, 7/16-14 x 6" Hex Head Cap, GR 5, YZ
0050	7104645	2	ASSEMBLY, Rear Wheel & Tire, 18 x 8.50-8, K500
0050-10	7012234	1	VALVE STEM
0050-20	7072705	1	TIRE, 18 x 8.50-8 4P K500 Tread Kenda
0050-30	7102823	1	RIM, W8 x 5.375 4H POS Silver
0060	7027192	8	LUG NUT, 1/2-20 YZ

Footnotes:

Front Axle Group, Cast Iron, No Susp.



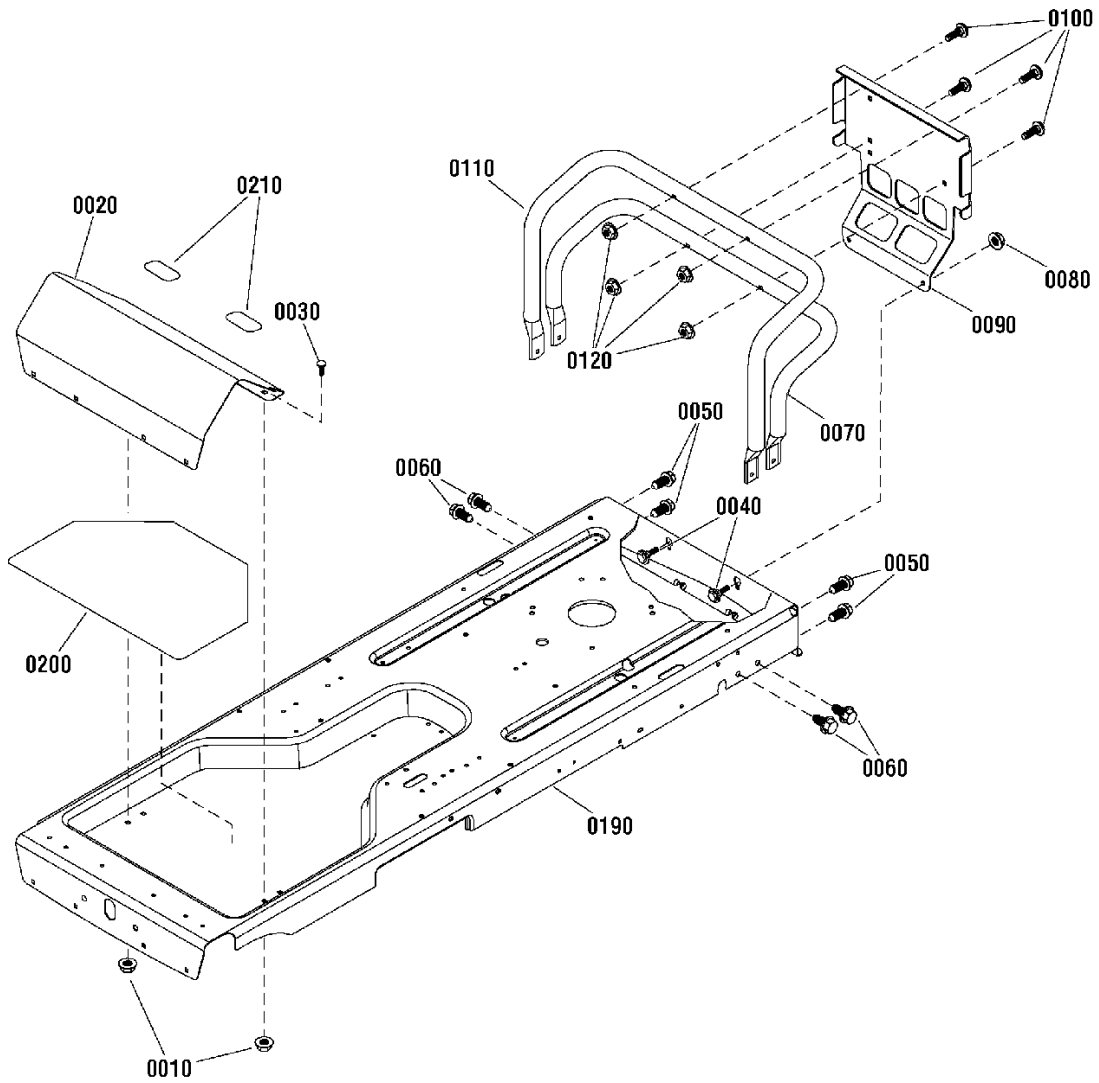
Front Axle Group, Cast Iron, No Susp.

Item	Part No	Qty	Description
0010	80002715	4	SCREW, 5/16-18 x 3/4" Hex Head Cap, GR 5, YZ (or 7091318)
0020	7090188	8	WASHER, 5/16" Flat
0030	80002728	8	NUT, 5/16-18, Hex Flange Lock, GR 5
0040	1930644	1	NUT, 1/2-13 Hex Flange Two-Way Lock, Black
0050	7501989	1	ASSEMBLY, Axle Bracket (Includes Item #'s 0050-10 & 0050-30)
0050-10	7103773	2	PLATE, Friction, Adhesive Backed
0050-30	7301076BM	1	BRACKET, Axle
0070	1931334	10	BOLT, 5/16-18 x 7/8" Round Head Short Square Neck, GR 5, Black
0080	7091811	4	BOLT, 5/16-18 x 5/8" Hex Flange lock, GR 5, YZ
0090	7301096BM	1	BRACKET, Hanger, Front, 46 / 52
0100	7091706	8	NUT, 5/16-18 Hex Top Lock, GR B
0110	7300004BM	2	BRACKET, Axle Support
0120	1734135	2	HUB CAP, 1.481 I.D x .62 Long Red Poly
0130	1611710	2	RING, Klipring External for .750 Dia. Shaft, Black
0140	1960160	4	WASHER, 0.750 ID x 1.60 OD x .05 Thick, Black
0150	7091587	1	WASHER, 1/2" Flat (or 7090250)
0160	7091558	1	SCREW, 1/2-13 x 3-1/2" Hex Head Cap, YZ
0170	1733448BM	2	WELDMENT, Caster Yoke & Spindle, Black
0180	7103454	2	BUSHING, Axle Pivot
0190	1704314	3	LUBE FITTING, 3/16" Press Fit
0200	1733426	1	ASSEMBLY, Front Axle, Iron Casting, Machined (Includes Item #'s 0190 & 0200-10)
0200-10	2176440	4	BUSHING, .765" ID, .787" OD, .81" Tall, 1.07" OD Flange

Footnotes:

Frame, Footrest, & Two Bar Bumper Group

2990154

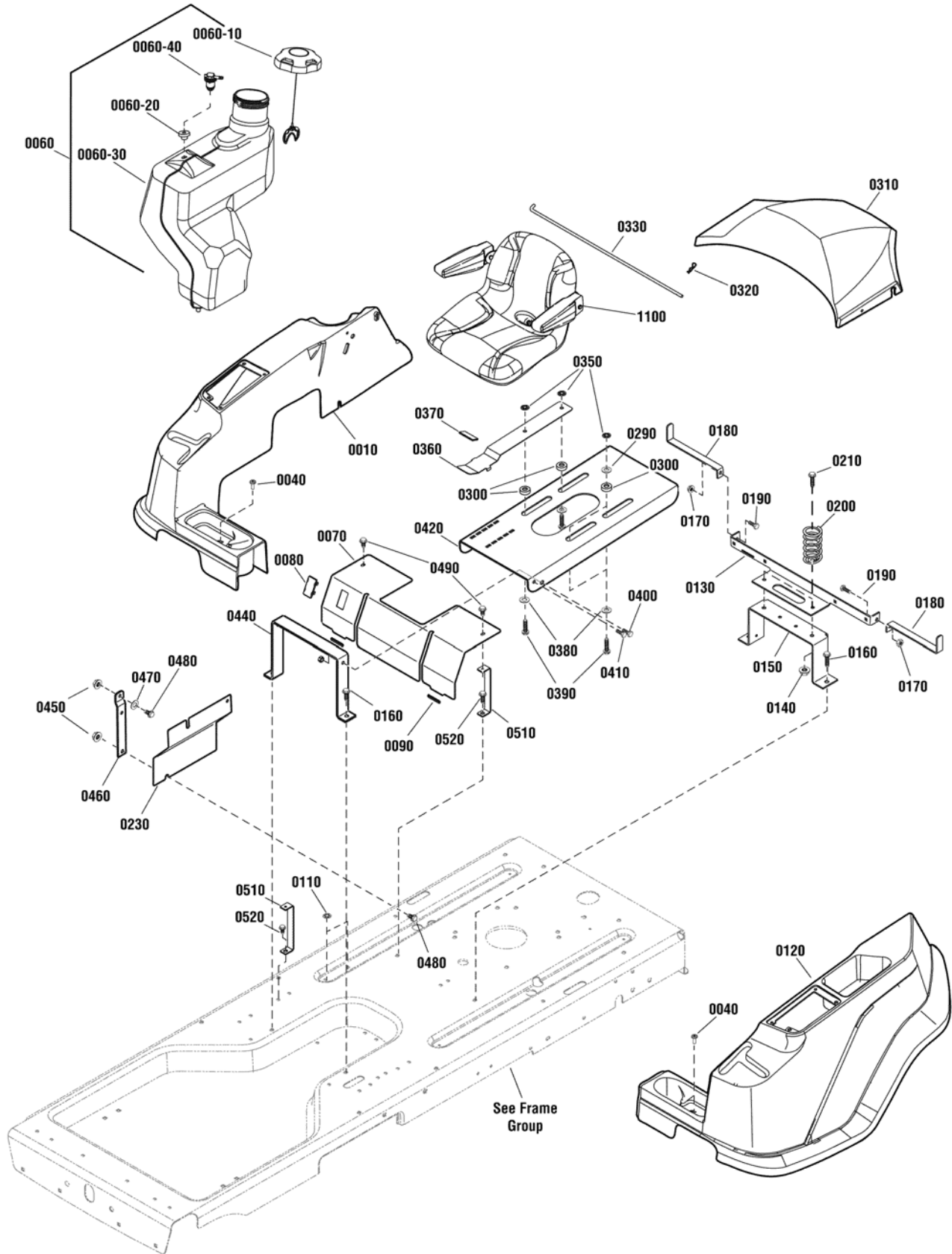


Frame, Footrest, & Two Bar Bumper Group

Item	Part No	Qty	Description
0010	80002728	2	NUT, 5/16-18, Hex Flange Lock, GR 5, Zinc/Clear (Was 7091601)
0020	7300140D	1	FOOTREST, SNAPPER
0030	80003584	2	BOLT, 5/16-18 x 5/8 Carriage, Grade 5, Zinc/Clear (Was 7090799)
0040	1716654	2	BOLT, 5/16-18 Shoulder, G5 Yel
0050	80002741	4	SCREW, 5/16-18X0.750, Washer Head Taptite, Zinc/Clear (Was 1664847)
0060	80002741	4	SCREW, 5/16-18X0.750, Washer Head Taptite, Zinc/Clear (Was 1664847)
0070	1753517BM	1	BUMPER, Lower Tube Single
0080	80003641	2	NUT, 5/16-18, Hex Flange Whiz-Lock, Zinc/Clear (Was 1927557)
0090	1753572D	1	PLATE, Brand - SNAPPER, Red
0100	80003731	4	BOLT, 5/16-18 x 1-3/4 Round Head Short Square Neck, GR 5, Zinc/Clear (Was 1931338)
0110	7301123BM	1	TUBE, Bumper, Upper, 285Z
0120	80002732	4	NUT, 5/16-18, Flange Nylock, GR F, Zinc/Clear (Was 1960686)
0190	7301073D	1	FRAME, RZT
0200	7103830	1	MAT, Floor Pan, RZT
0210	7104571	2	PAD, Foot, Wide

Footnotes:

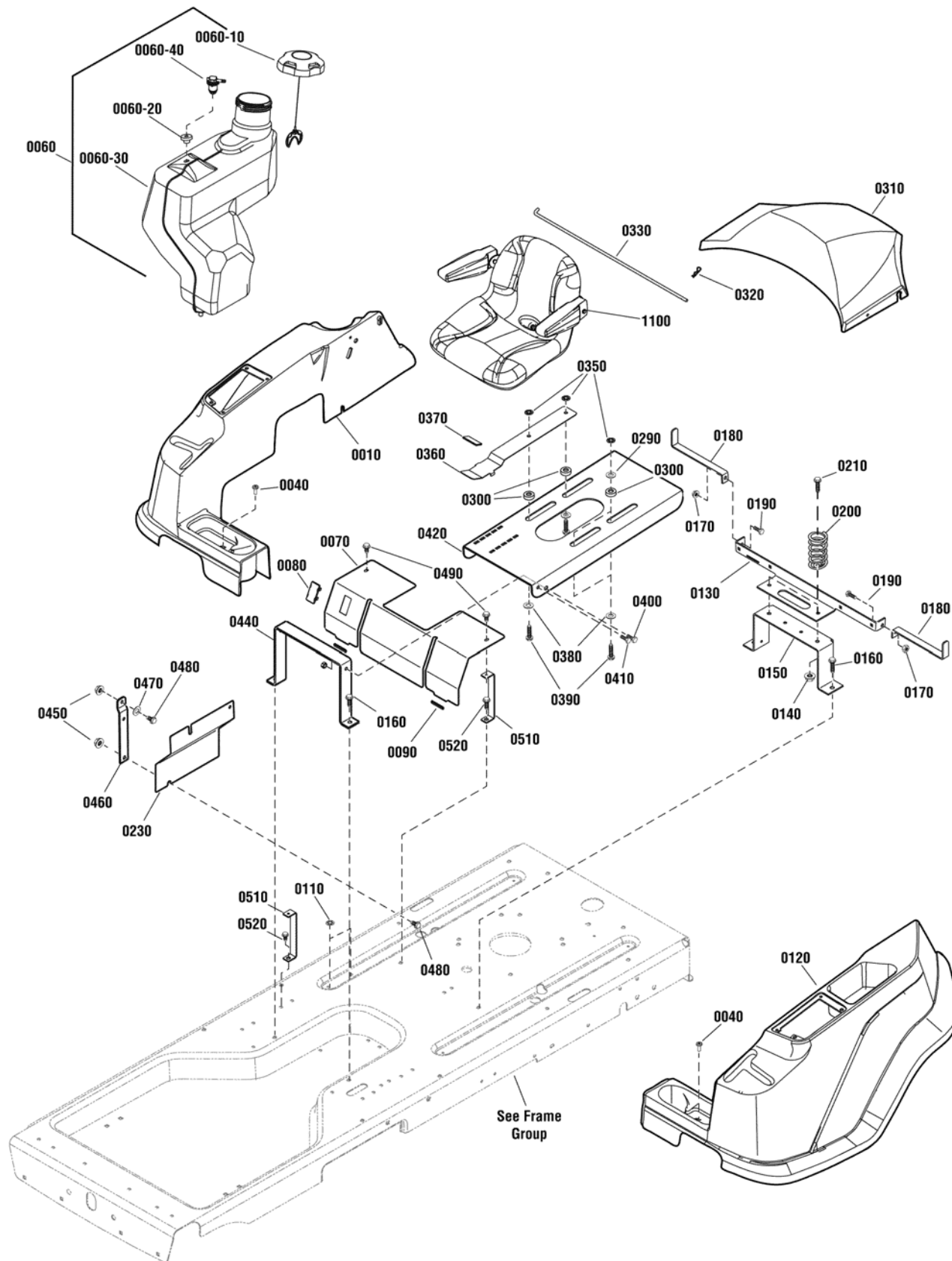
Seat, Body & Fuel Tank Group



Item	Part No	Qty	Description
0010	7103775	1	FENDER, RH
0040	7091246	2	SCREW, 1/4-20 x 3/4 Pan Head Self-Tap (Torx) BZ
0060	7103815	1	TANK ASSEMBLY, Fuel, 3 Gal.
0060-10	1715917	1	CAP, Fuel Tank
0060-20	1726400	1	BUSHING, Fuel Tank, Rubber
0060-30	----	1	TANK, Fuel, 3 Gal.
0006-40	7103536	1	ELBOW ASSEMBLY, Pickup Tube
0070	7301216BM	1	COVER, Battery
0080	1722611	1	PLUG, Hole 0.85 X 1.73, Black, ABS
0090	7104514	2	STRIP, Trim, 1.50"
0110	7013847	2	RETAINER, 3/8 Bolt
0120	7103776	1	FENDER, LH
0130	7301107BM	1	BRACKET, Support, Seat & Fender
0140	80003675	4	NUT, 5/16-18 Hex Cap Lock, GR5, Zinc/Clear (Was 7091575)
0150	7043316BM	1	BRACKET, Seat Support
0160	7090815	4	SCREW, 3/8-16 x 3/4 Hex Washer Self-Tapping, BZ
0170	7091298	2	NUT, 5/16-18 Hex Lock, ESNA, YZ
0180	7301101BM	2	BRACKET, Support, Fender
0190	80002716	2	SCREW, 5/16-18 x 1 Hex Head Cap, GR 5, Zinc/Clear (Was 7027168)
0200	7103425	2	SPRING, 3.62", Compression
0210	7091591	2	BOLT, 5/16-18 x 1" Hex Flange Lock, GR 5, YZ
0230	7301126BM	1	PLATE, Side, RH
0290	7011763	2	WASHER, 5/16, Fender
0300	7103920	4	SPACER, Seat, Adjustable
0310	7103777	1	COVER, Engine
0320	80003663	1	HAIRPIN, Quick, .080 Wire, 1.19LG, Zinc/Clear (Was 1722460)
0330	7103998	1	ROD, Pivot, Hood
0350	80002734	4	RETAINER, 5/16, GR5, Zinc/Clear (Was 7011791)
0360	7103673BM	1	LATCH, Seat
0370	885215	1	COVER, Seat Adjustment Lever
0380	80003525	4	WASHER, Flat, 5/16 ID x 1 OD, Zinc/Clear (Was 1919381)
0390	1933689	4	SCREW, 5/16-18 x 1-1/2 Hex Head Flange Lock, BLK
0400	7015761	2	BOLT, 5/16-18 X .454, .435 Dia, Shoulder, YZ
0410	7091198	2	SCREW, 3/8-16 x 5/8" Hex Washer Self-Tap, BP
0420	7301095BM	1	PLATE, Adjustable Seat
0440	7301070BM	1	BRACKET, Seat
0450	80002729	2	NUT, 3/8-16, GR5, Flanged Lock, Zinc/Clear (Was 1931211)
0460	7301110BM	1	BRACKET, Fuel Tank Support
0470	720163	1	WASHER, .34 x .62 x 16 GA Flat
0480	7091086	2	SCREW, 3/8-16 x 3/4 Hex Head Cap, GR 5 ZP (Was 7090134)
0490	80002738	2	SCREW, 1/4-20X.500, Hex HD, Self-Tap, Zinc/Clear
0510	7301217BM	2	BRACKET, Battery Cover, Black
0520	720353	2	SCREW, 3/8-16 x 3/4 Hex Washer Head Self-Tap

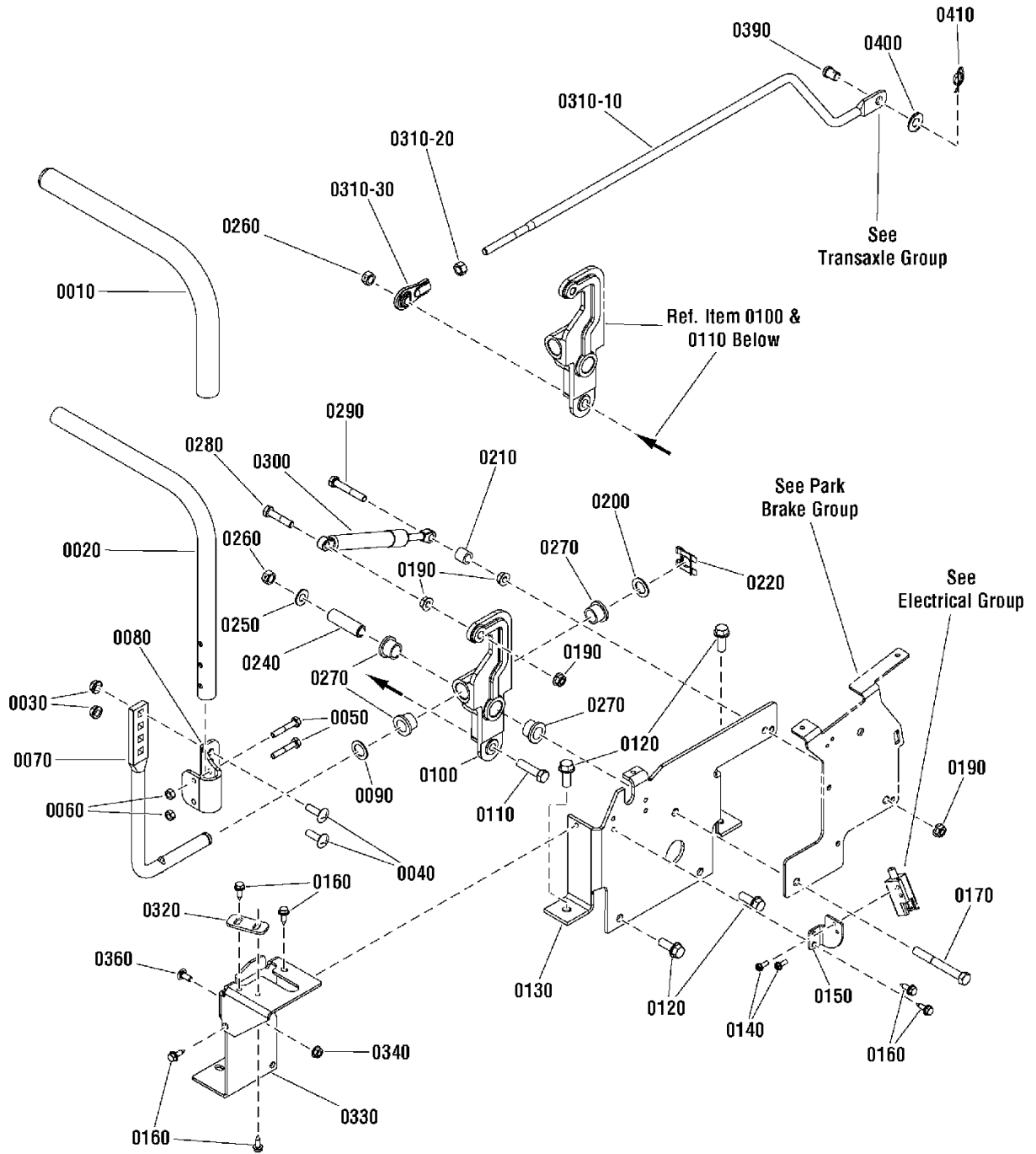
Footnotes:

Seat, Body & Fuel Tank Group



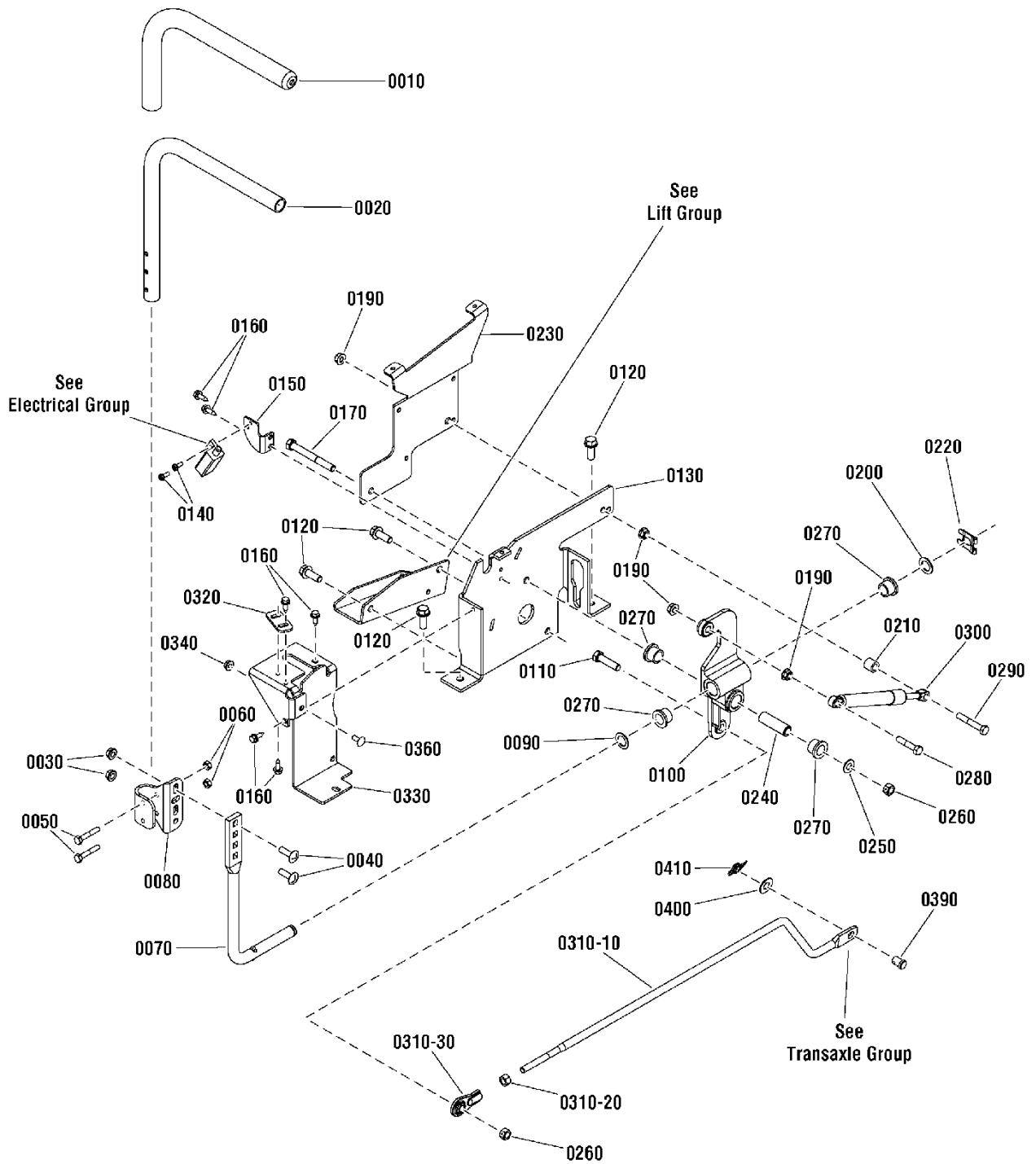
Item	Part No	Qty	Description
1100	1754218	1	SEAT, 15" Back With Armrests

Footnotes:



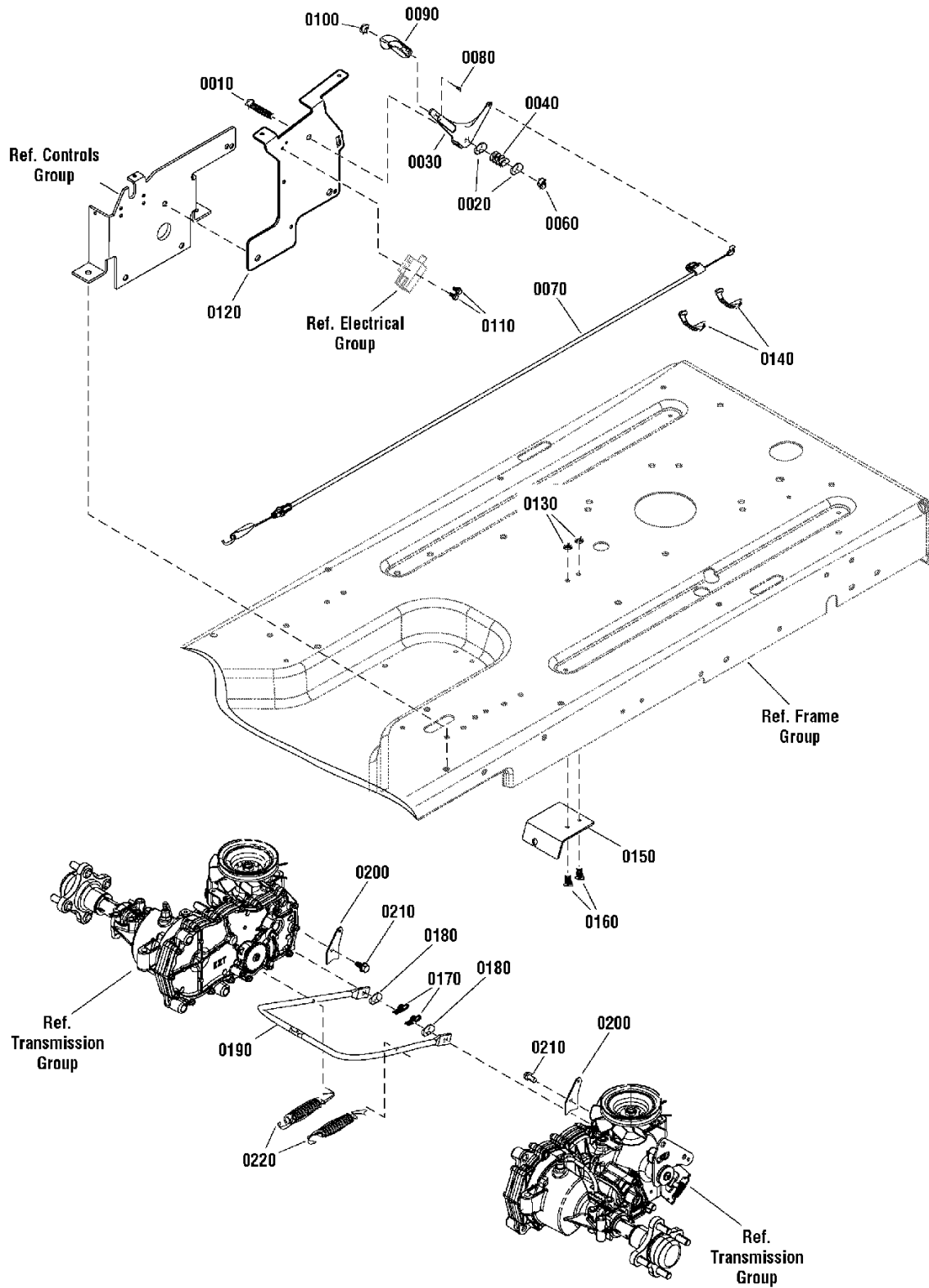
Item	Part No	Qty	Description
0010	7100051	1	GRIP, Handle
0020	7301168BM	1	HANDLE, Adjustable Black
0030	1935048	2	NUT, 5/16-18 Hex Flange Two-Way Lk Ga
0040	7091714	2	BOLT, 5/16-18 x 1" Round Head Square Neck, GR 5, YZ
0050	80002713	2	SCREW, 1/4-20 x 1-1/2" Hex Head Cap, GR 5, Black (Was 1922837)
0060	7090372	2	NUT, 1/4-20 Hex Center Lock, GR 5 BZ
0070	7104677	1	ROD, Handle, Adjustable
0080	7074628BM	1	BRACKET, Handle Adjustment Black
0090	7091628	1	WASHER, 5/8" Flat, YZ
0100	7100715	1	ARM, Control, Die Cast, LH
0110	7091497	1	SCREW, 3/8-16 x 1-1/2" Hex Head Cap, GR 5, YZ
0120	7090324	4	SCREW, 3/8-16 x 1" Hex Washer Self-Tap
0130	7043302BM	1	BRACKET, Control, LH
0140	7090913	2	SCREW, #10-24 x 1/2" Hex Washer Self-Tap (Torx)
0150	7300032BM	1	BRACKET, Switch
0160	7090290	6	SCREW, 1/4-20 x 3/4" Hex Washer Self-Tap, Black
0170	1922918	1	SCREW, 3/8-16 x 3-1/4" Hex Head Cap, GR 5, Black
0190	80002728	4	NUT, 5/16-18 Hex Flange Lock, GR 5, YZ (Was 7091601)
0200	7900016	1	WASHER, 5/8 ID. x 1" OD. x .065 Nylon
0210	7023206	1	SPACER, .625 OD x .380 ID x .564 L
0220	7104704	1	CLIP, Spring, 5/8" OD Shaft
0240	7100714	1	SPACER, Sleeve, RZT
0250	7090122	1	WASHER, 3/8" Flat (SAE) YZ
0260	7091585	2	NUT, 3/8-16 Hex Center Lock, GR 5, YZ
0270	7013874	4	BUSHING, Bronze, 5/8 x 5/8
0280	7091540	1	SCREW, 5/16-18 x 1-1/2 Hex Head Cap, GR 5, YZ
0290	7027174	1	SCREW, 5/16-18 x 2" Hex Head Cap, GR 5
0300	5103511	1	DAMPENER, Control (Was 5100728)
0310-10	7104168	1	ROD, Link Fwd/Rev
0310-20	7091630	1	NUT, 3/8-24 Hex, GR 5, YZ
0310-30	7100743	1	ROD END (3/8-24 thread)
0320	7300009BM	1	PLATE, Fwd/Rev Adjust
0330	7301128BM	1	BRACKET, Guide, Stick, Control, LH
0340	80002727	1	NUT, 1/4-20 Hex Flange Lock, Black (Was 1960294)
0360	7091573	1	BOLT, 1/4-20 x 5/8" Round Head Short Square Neck, GR 5, YZ
0390	7900000	1	CLEVIS PIN, 7/16 X 1"
0400	7031961	1	WASHER, 7/16" Flat
0410	7091594	1	COTTER PIN, 1/2 Self, YZ

Footnotes:



Item	Part No	Qty	Description
0010	7100051	1	GRIP, Handle
0020	7301168BM	1	HANDLE, Adjustable Black
0030	1935048	2	NUT, 5/16-18 Hex Flange Two-Way Lk Ga
0040	7091714	2	BOLT, 5/16-18 x 1" Round Head Square Neck, GR 5, YZ
0050	80002713	2	SCREW, 1/4-20 x 1-1/2" Hex Head Cap, GR 5, Black (Was 1922837)
0060	7090372	2	NUT, 1/4-20 Hex Center Lock, GR 5 BZ
0070	7104677	1	ROD, Handle, Adjustable
0080	7074628BM	1	BRACKET, Handle Adjustment Black
0090	7091628	1	WASHER, 5/8" Flat, YZ
0100	7100717	1	ARM, Control, Die Cast, RH
0110	7091497	1	SCREW, 3/8-16 x 1-1/2" Hex Head Cap, GR 5, YZ
0120	7090324	4	SCREW, 3/8-16 x 1" Hex Washer Self-Tap
0130	7043330BM	1	CONTROL BRACKET, RH
0140	7090913	2	SCREW, #10-24 x 1/2" Hex Washer Self-Tap (Torx)
0150	7300032BM	1	BRACKET, Switch
0160	7090290	6	SCREW, 1/4-20 x 3/4" Hex Washer Self-Tap, Black (Was 7091686)
0170	1922918	1	SCREW, 3/8-16 x 3-1/4" Hex Head Cap, GR 5, Black
0190	80002728	4	NUT, 5/16-18 Hex Flange Lock, GR 5, YZ (Was 7091601)
0200	7900016	1	WASHER, 5/8 ID. x 1" OD. x .065 Nylon
0210	7023206	1	SPACER, .625 OD x .380 ID x .564 L
0220	7104704	1	CLIP, Spring, 5/8" OD Shaft
0230	7301072BM	1	BRACKET, Fender Support, RH
0240	7100714	1	SPACER, Sleeve, RZT
0250	7090122	1	WASHER, 3/8" Flat (SAE) YZ
0260	7091585	2	NUT, 3/8-16 Hex Center Lock, GR 5, YZ
0270	7013874	4	BUSHING, Bronze, 5/8 x 5/8
0280	7091540	1	SCREW, 5/16-18 x 1-1/2 Hex Head Cap, GR 5, YZ
0290	7027174	1	SCREW, 5/16-18 x 2" Hex Head Cap, GR 5
0300	5103511	1	DAMPENER, Control (Was 5100728)
0310-10	7104168	1	ROD, Link Fwd/Rev
0310-20	7091630	1	NUT, 3/8-24 Hex, GR 5, YZ
0310-30	7100743	1	ROD END (3/8-24 thread)
0320	7300009BM	1	PLATE, Fwd/Rev Adjust
0330	7301129BM	1	BRACKET, Guide, Stick, Control, RH
0340	80002727	1	NUT, 1/4-20 Hex Flange Lock, Black (Was 1960294)
0360	7091573	1	BOLT, 1/4-20 x 5/8" Round Head Short Square Neck, GR 5, YZ
0390	7900000	1	CLEVIS PIN, 7/16 X 1"
0400	7031961	1	WASHER, 7/16" Flat
0410	7091594	1	COTTER PIN, 1/2 Self, YZ

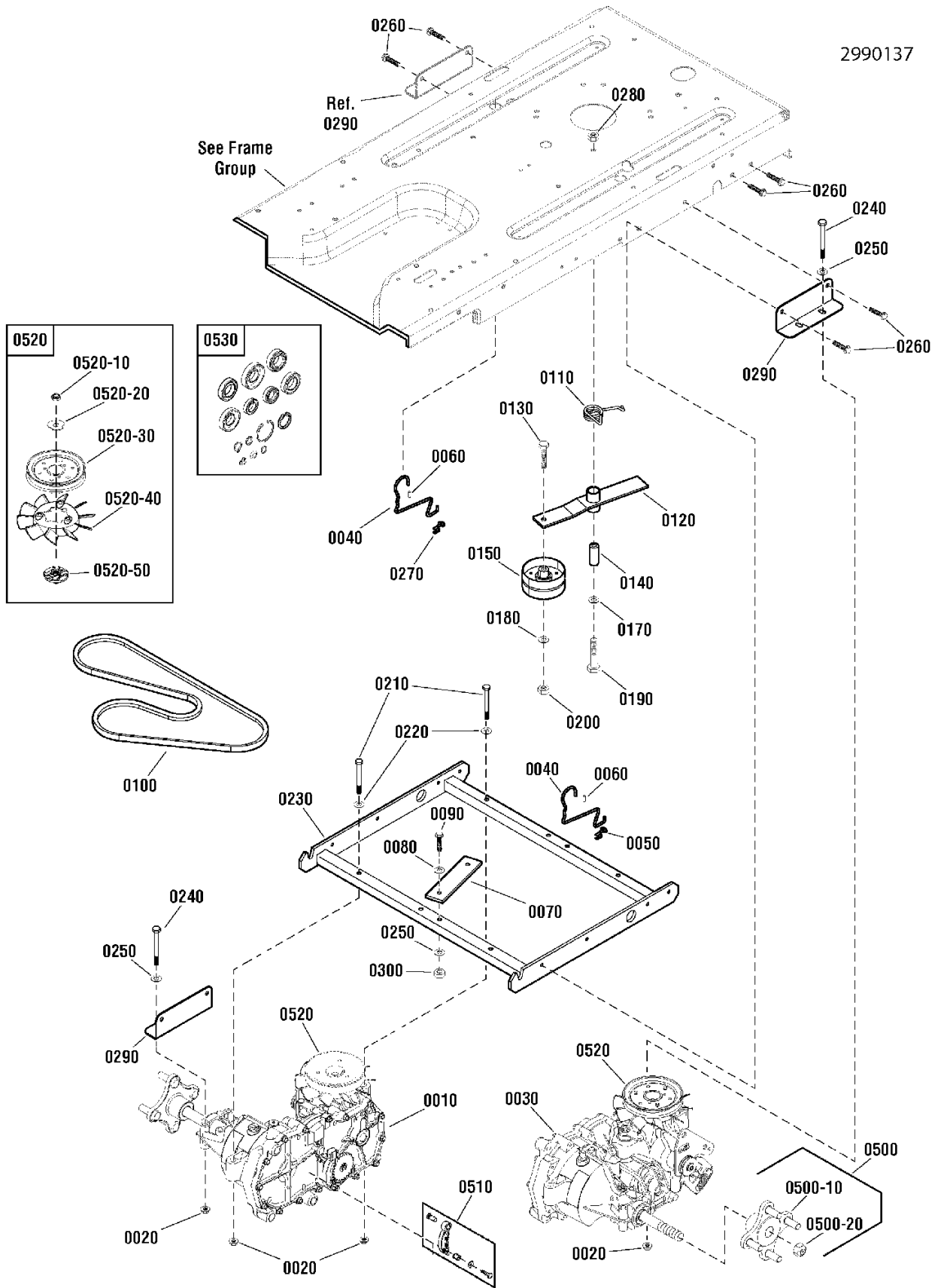
Footnotes:



Item	Part No	Qty	Description
0010	7091560	1	SCREW, 3/8-16 x 2-1/4" Hex Head Cap, GR 5, YZ
0020	7090517	2	WASHER, 7/16" Flat, YZ
0030	7301074	1	LEVER, Park Brake
0040	7028036	1	SPRING, Friction Pack
0060	7091299	1	NUT, 3/8-16,Hex Nyloc, YZ
0070	7103792	1	CABLE, Park Brake, RZT
0080	7091017	1	SCREW, #8-32 x 3/8" Cross Recess Filister Head, GR 2, BZ
0090	7023655	1	LEVER, Throttle Control
0100	7091018	1	NUT, #8-32 Hex, GR 2B, YZ
0110	7090913	2	SCREW, #10-24 x 1/2" Hex Washer Self-Tap (Torx)
0120	7301075BM	1	BRACKET, Lever, Park Brake
0130	80002727	2	NUT, 1/4-20 Hex Flange Lock, Black (Was 1960294)
0140	7012080	2	* CABLE TIE, 7.0
0150	7301086BM	1	BRACKET, Cable, Park Brake
0160	80002437	2	SCREW, 1/4-20 x 5/8" Hex Head Cap, GR 5, Zinc/Clear (Was 7027172 or 7090072)
0170	7091594	2	COTTER PIN, 1/2 Self, YZ
0180	7090122	2	WASHER, 3/8" Flat (SAE) YZ
0190	7103436	1	ROD, Park Brake, RZT
0200	7301092BM	2	TAB, Spring, Park Brake
0210	80002738	2	SCREW, 1/4-20 x 1/2" Hex Washer Self-Tap, Black (Was 1925003)
0220	80003643	2	SPRING, Extension, 0.562 OD x 4.250 LG .049 Wire, Black (Was 2159106)

Footnotes:

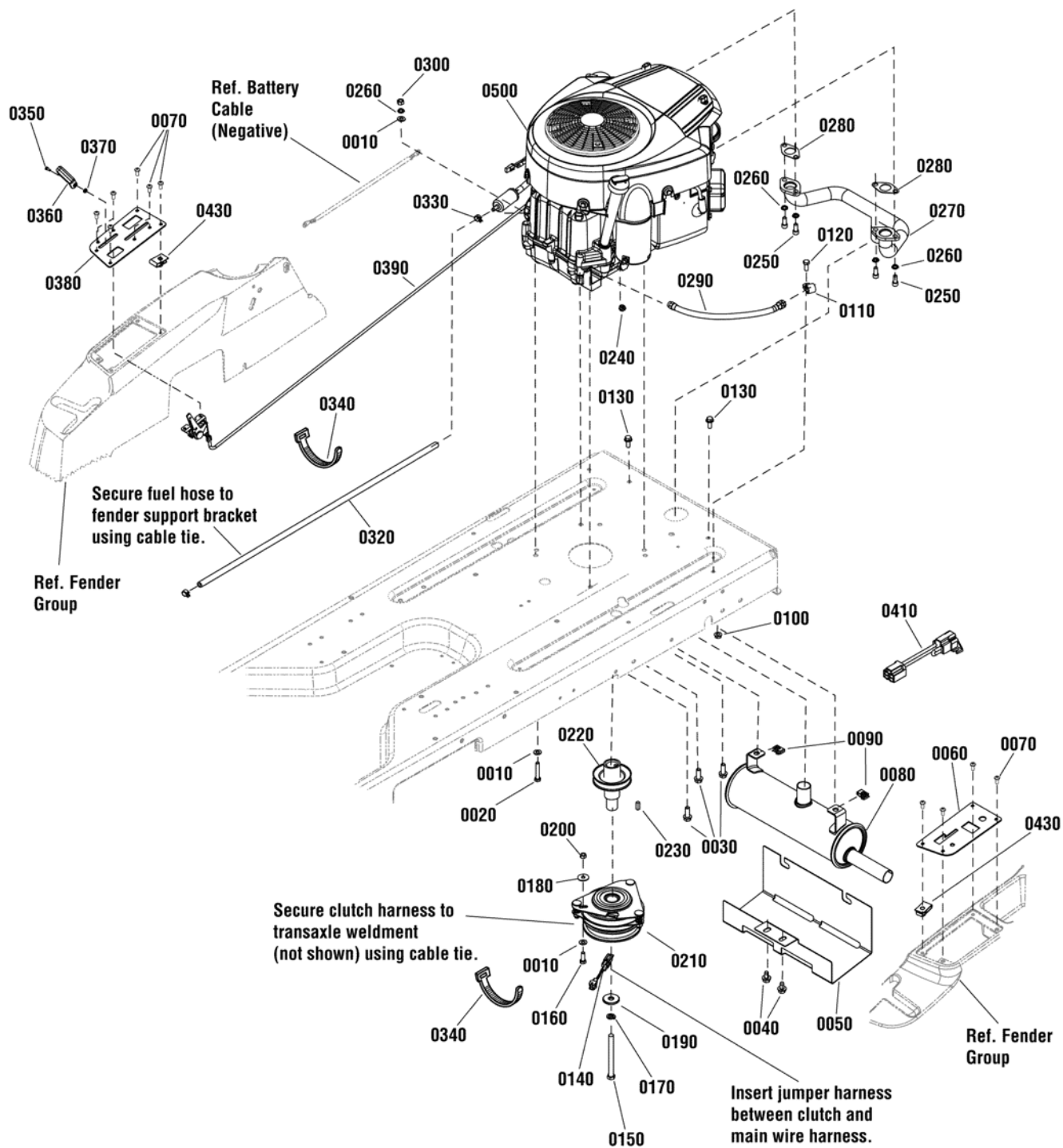
NOTE * Secure parking brake (item 0070) to frame & control bracket, using cable tie (item 0140).



Item	Part No	Qty	Description
0010	7104657	1	TRANSAXLE, EZT, Hydro-Gear, RH (ZC-DUBB-2ADC-1DPX)
0020	720145	8	NUT, 5/16-18 Hex Flange Center Lock
0030	7104656	1	TRANSAXLE, EZT, Hydro-Gear, LH (ZC-AUBB-2ADB-1DPX)
0040	7103512	2	ROD, Roll Release
0050	1725550	1	CLIP, Rod End Clevis LH (for .188 Dia. Rod)
0060	7103537	2	CAP, Vinyl
0070	7104674	1	RUBBER, Anti-Rotation
0080	7011763	1	WASHER, Fender, 5/16"
0090	80002717	1	SCREW, 5/16-18 x 1-3/4" Hex Head Cap, GR 5, YZ (Was 7091908)
0100	7100102	1	V-BELT, Hydro Drive (HA Section 58.0" effective length) (58" effective length)
0110	7044760	1	SPRING, Torsion, RH Wind
0120	7400208BM	1	WELDMENT, Hydro Idler Arm
0130	7091305	1	SCREW, 3/8-16 x 2" Hex Head Cap, GR 5, YZ
0140	7200034	1	SPACER, Hydro Idler
0150	7100103	1	IDLER, 3.25 OD x.391 ID x 1.63, Backside
0170	7091587	1	WASHER, 1/2" Flat
0180	7090122	1	WASHER, 3/8" Flat (SAE)
0190	7091218	1	SCREW, 1/2-13 x 2-1/2" Hex Head Cap, GR 5, BP
0200	7091585	1	NUT, 3/8-16 Hex Center Lock, GR 5, YZ
0210	7091830	4	SCREW, 5/16-18 x 3" Hex Head Cap, GR 5, YZ
0220	7015686	4	SHIM WASHER, 5/16" Flat
0230	7400288BM	1	WELDMENT, Transaxle Support
0240	7091944	4	SCREW, 5/16-18 x 2-3/4" Hex Head Cap, GR 5, YZ
0250	7090188	5	WASHER, 5/16" Flat
0260	80002741	8	SCREW, 5/16-18 x 3/4" Hex Washer Self-Tap, YZ (Was 1664847 or 7091541)
0270	1717024	1	CLIP, Rod End Clevis RH (for .188 Dia. Rod)
0280	7091894	1	NUT, 1/2-13 Hex Center Lock, GR 5, YZ
0290	7300000BM	2	BRACKET, Transaxle Support
0300	80003675	1	NUT, 5/16-18 Hex Center Lock, GR 5, YZ (Was 7091575)
0500	7600158	2	KIT, Hub Replacement
0500-10	--	2	HUB, EZT Transmission
0500-20	--	2	NUT, EZT Transmission
0510	1728075	1	ASSEMBLY, Parking Brake Arm, Transmission
0520	7600157	1	KIT, Fan & Pulley, EZT
0520-10	44133	1	* NUT, 1/2-20 Jam w/Patch
0520-20	51523	1	* WASHER, Slotted
0520-30	52364	1	* PULLEY, 4-1/2"
0520-40	53352	1	* FAN, 6.0 Inch (10 Blade)
0520-50	52366	1	* HUB, Pulley, 1.56
0530	1728060	1	KIT, Hydro Seal

Footnotes:

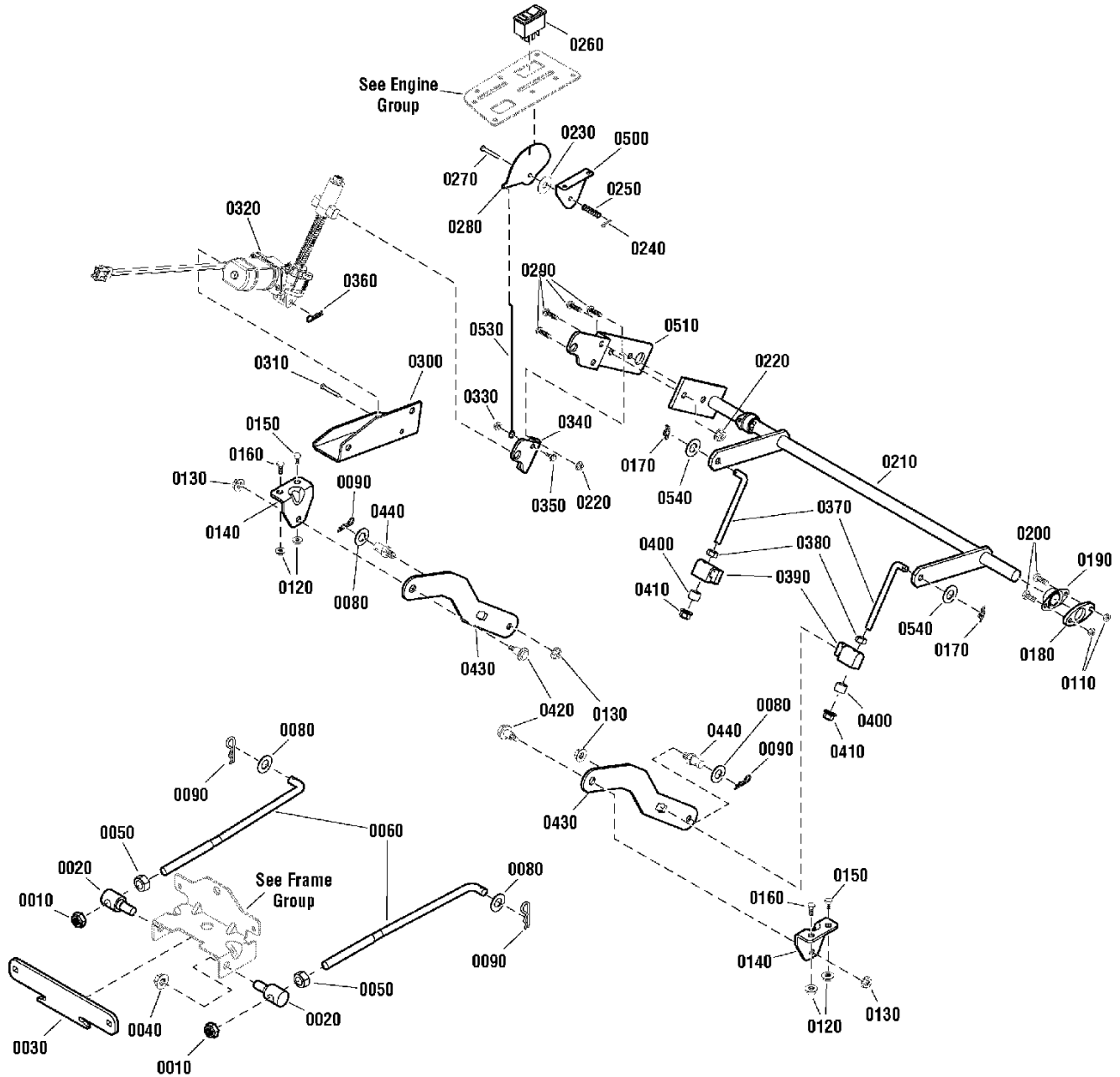
NOTE * Hydro Gear part number



Item	Part No	Qty	Description
0010	7090188	3	WASHER, 5/16" Flat
0020	80002717	1	CAPSCREW, 5/16-18X1.750, Hex Head, G5 Zinc/Clear (Was 7091908)
0030	7090324	3	SCREW, 3/8-16 x 1" Hex Washer Self-Tap, BZ
0040	7091198	2	SCREW, 3/8-16 x 5/8" Hex Washer Self-Tap, BP
0050	7301083BM	1	SHIELD, Heat, Muffler
0060	7301084BM	1	PANEL, Control, LH
0070	7090999	12	SCREW, 1/4-20 x 5/8" Pan Head Self-Tap (Torx), BP
0080	7103411	1	MUFFLER, RZT
0090	1935255	2	SPEED NUT, 5/16-18 Lug Type
0100	80002728	1	NUT, 5/16-18, Hex Flange Lock, GR 5, Zinc/Clear (Was 7091601)
0110	7900020	1	CLIP, Harness, 5/8"
0120	80002715	1	SCREW, 5/16-18 x 3/4" Hex Head Cap, GR 5, YZ (Was 7091318)
0130	80003531	2	SCREW, 5/16-18 X .750, Flanged Whiz-Lock, GR5 (Was 1930591)
0140	1737462	1	HARNESS, Jumper 4" Long
0150	7092130	1	SCREW, 7/16-20 x 4-1/2" Hex Head Cap, GR 5, YZ
0160	7091904	1	SCREW, 5/16-18 x 7/8" Hex Head Cap, GR 5, YZ
0170	7091301	1	WASHER, 7/16" Split Lock, YZ
0180	7011763	1	WASHER, Fender, 5/16"
0190	7029138	1	WASHER, .468 x 1.50 x .19 Flat, YZ
0200	80003675	1	NUT, 5/16-18 Hex Cap Lock, GR5 YZ (Was 7091575)
0210	1717664	1	CLUTCH, Electric, Ogura JD-11, #504586
0220	7043343	1	PULLEY, Engine
0230	7016755	1	KEY, 1/4" Square x 3/4"
0240	80002727	1	NUT, 1/4-20 Hex Flange Lock, GR 5, Zinc/Clear (Was 7091584)
0250	7091738	4	SCREW, 5/16-18 x 3/4" Allen Socket Head, GR 8, BZ
0260	7091315	5	WASHER, 5/16" Split Lock, YZ
0270	7103414	1	MANIFOLD, B&S V-Twin
0280	1731214	2	GASKET, Exhaust B&S Reg (No Chre) 273485
0290	1726498	1	HOSE, Oil Drain, .375 ID 16.5 L
0300	80002725	1	NUT, 5/16-18, GR5, Zinc/Clear (Was 7091511)
0320	7200140	1	HOSE, Fuel, 1/4" ID x 32"
0330	7029900	2	CLAMP, Fuel Hose (Was 7012222)
0340	7012080	3	CABLE TIE, 7"
0350	7091017	1	SCREW, #8-32 x 3/8" Cross Recess Filister Head, GR 2, BZ
0360	7103888	1	KNOB, Throttle, Red
0370	7091018	1	NUT, #8-32 Hex, GR 2B, YZ
0380	7301093BM	1	PANEL, Control, RH
0390	7103771	1	THROTTLE ASSEMBLY, Choke-A-Matic, B&S
0410	1734025	1	WIRES & CONNECTORS ASSEMBLY, Jumper, 3.0" LG
0430	7023295	4	U-NUT, 1/4-20
0500	406777-0172-B1	1	ENGINE, 20HP B&S Twin CYL Intek (EXP), Mod. 406777-0172-B1
0500	406777-0173-B1	1	ENGINE, 20HP B&S Twin CYL Intek (EXP), Mod. 406777-0173-B1

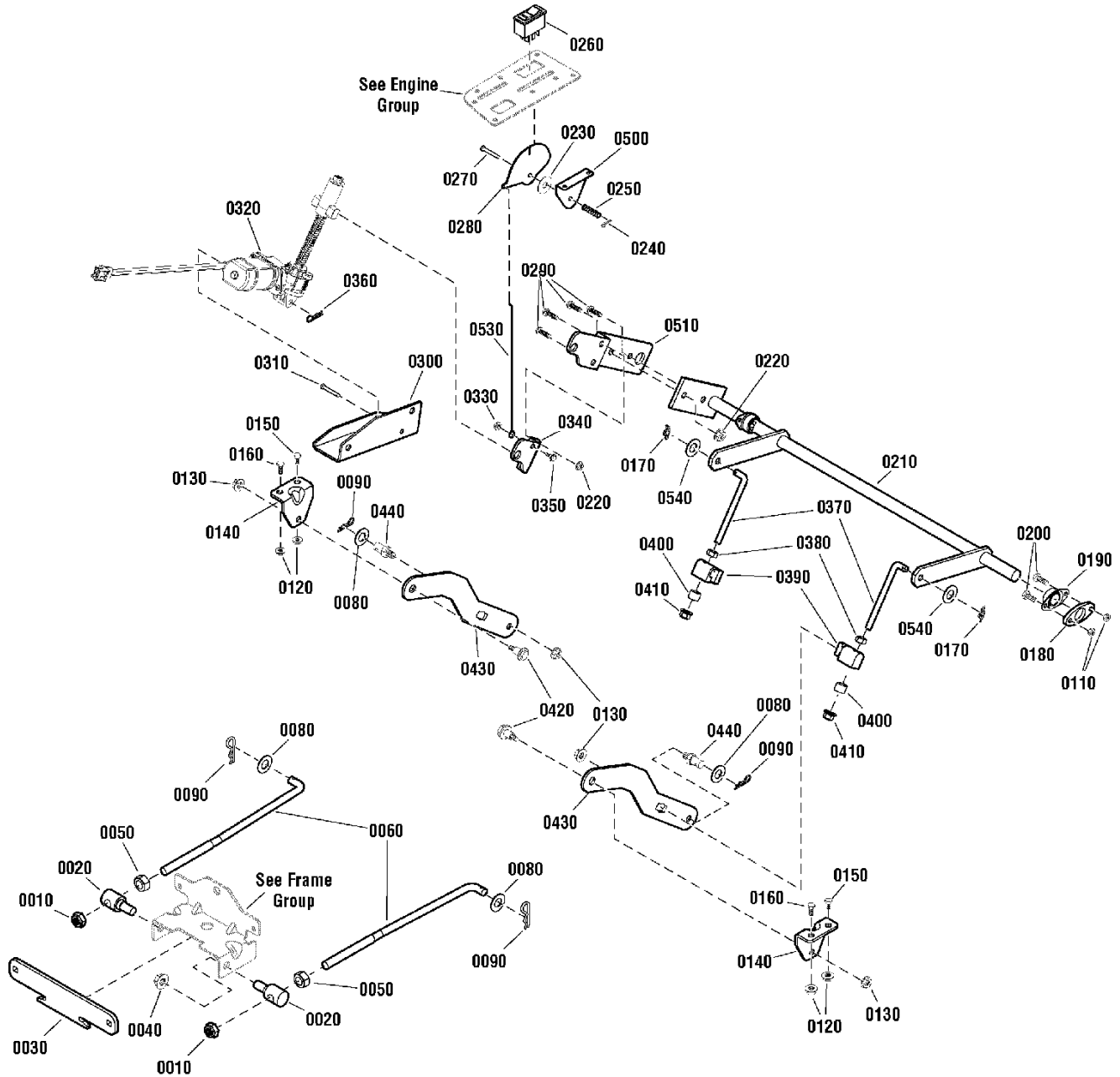
Footnotes:

NOTE: * Purchase engine parts from engine manufacturer dealer.



Item	Part No	Qty	Description
0010	1960379	4	NUT, 1/2-13 Jam, Esna Light Thin
0020	1737417	2	TRUNNION, Unthreaded
0030	7301097BM	1	SUPPORT, Hanger (46/52)
0040	1930644	2	NUT, 1/2-13 Hex Flange Two-Way Lock Black
0050	1913744	4	NUT, 1/2-13 Hex Jam, Black
0060	1736081	4	ROD, Front Bail (1/2-13 thread) 46, 52" MWR
0080	1960170	6	WASHER, 1/2" Flat (0.51 ID x 1.00 OD x .10 Thick) Black
0090	7091503	6	HAIR PIN, 3/32 x 1-1/2" YZ
0110	7092126	4	NUT, 1/4-20 Hex Center Lock, GR 5
0120	80002728	4	NUT, 5/16-18 Flange Lock, YZ (Was 7091601)
0130	720148	4	NUT, 3/8-16 Hex Flange Center Lock, Zinc Plated
0140	7300028BM	2	BRACKET, Deck Hanger
0150	7091811	2	BOLT, 5/16-18 x 5/8" Hex Flange lock, GR 5, YZ
0160	80002716	2	SCREW, 5/16-18 x 1" Hex Head Cap, GR 5, YZ (Was 7027168)
0170	7091593	2	COTTER PIN, Self Locking, 3/8, YZ
0180	7301125BM	1	SPACER, Bearing, .25"
0190	7026196	1	BEARING, Flange, .75 ID PM
0200	80002712	4	SCREW, 1/4-20 x 3/4" Hex Head Cap, GR 5 YZ (Was 7091495)
0210	7400011BM	1	WELDMENT, Deck Lift, 38/42
0220	80002729	4	NUT, 3/8-16 Hex Flange lock, YZ (Was 7091619)
0230	7023649	1	WASHER, 5/16" Nylon
0240	7090673	1	COTTER PIN, .06 x 1/2", YZ (Was 7091629)
0250	722412	1	SPRING, Compression
0260	1734141	1	SWITCH, Rocker Electric Height-Of-Cut
0270	724579	1	CLEVIS PIN, .25 x 1.09
0280	7301119BC	1	LEVER, Indicator, Height-Of-Cut
0290	7091304	4	SCREW, 3/8-16 x 1" Hex Head Cap, GR 5, YZ
0300	7301103BM	1	BRACKET, Motor Mount
0310	1668344	1	SHEAR PIN, .248 ID x 1-3/4" Long
0320	7103818	1	MOTOR, Actuator, Lift, Deck
0330	80002727	1	NUT, 1/4-20 Hex Flange Lock, GR 5, YZ (Was 7091584)
0340	7301105BM	1	BRACKET, Lift, Deck, Secondary
0350	720100	1	SHOULDER BOLT, 1/4-20 x 3/8"
0360	80003663	1	HAIRPIN, Quick, .080 Wire (Was 1722460)
0370	1734217	2	ROD, Mower Lift (3/8-16 thread) Yellow
0380	1916950	2	NUT, 3/8-16 Hex, Black
0390	1731894	2	TRUNNION, Powdered Metal, Yellow, Regent
0400	1666294	4	SPACER, .385 ID x .6697 OD x .455 Long, PM YEL
0410	80003660	2	NUT, 3/8-16 Hex Flange Esna, Black (Was 1960687)
0420	1732129	2	SHOULDER BOLT, 3/8-16 x .94, BZ
0430	7301098BM	2	BAR, Rear Lift
0440	721221	2	PIN, 3/8-16 Threaded Shoulder
0500	7301120BM	1	BRACKET, Indicator, Height-Of-Cut
0510	7301104BM	1	BRACKET, Lift, Deck, Primary

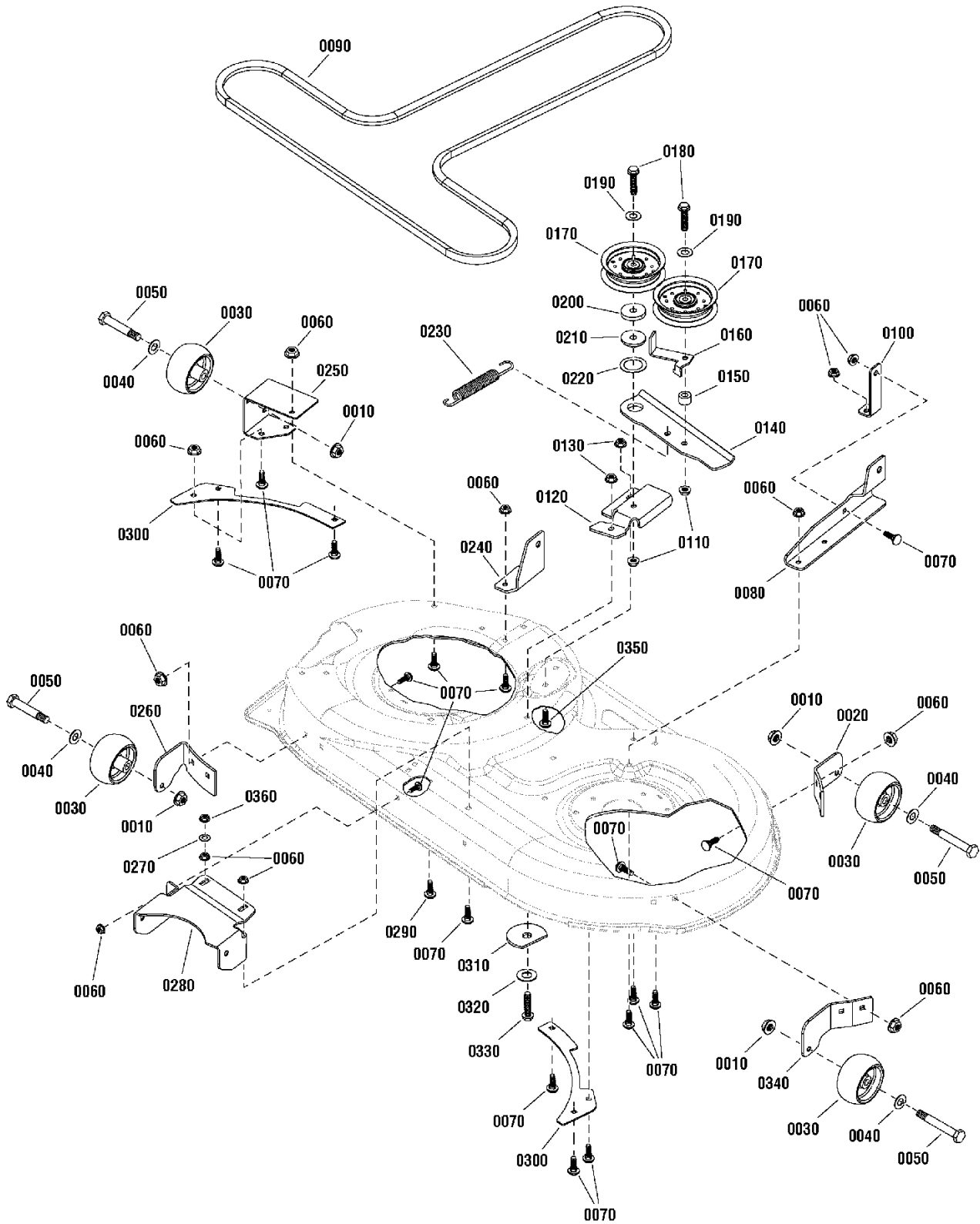
Footnotes:



Deck Lift Group, EHOC, Frame Hung

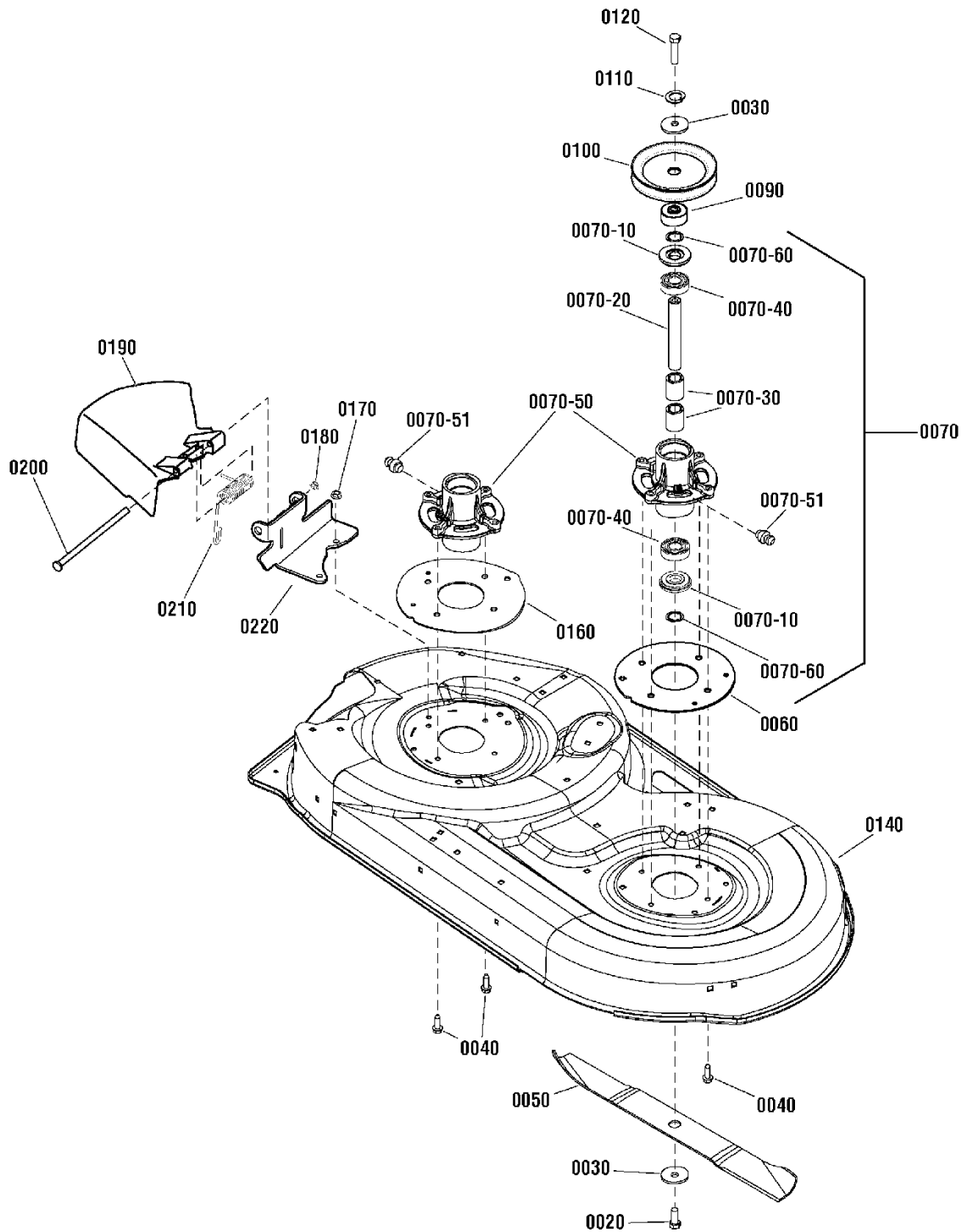
Item	Part No	Qty	Description
0530	7103956	1	ROD, Indicator, Height-Of-Cut
0540	7090122	2	WASHER, 3/8" Flat (SAE)

Footnotes:



Item	Part No	Qty	Description
0010	80003660	4	NUT, 3/8-16 Hex Flange Esna, Black (Was 1960687)
0020	1731403BM	1	SUPPORT, Gage Wheel, LH
0030	1714760	4	WHEEL, Gage
0040	1960170	4	WASHER, 1/2" Flat (0.51 ID x 1.00 OD x .10 Thick) Black
0050	2108765	4	SHOULDER BOLT, 3/8-16 Thread
0060	80002728	22	NUT, 5/16-18, Hex Flange Lock, YZ (Was 1931277)
0070	1931333	21	BOLT, 5/16-18 x 3/4" Round Head Short Square Neck, GR 5, Black
0080	7301165BM	1	BRACKET, Support, Deck, Rear, 42", LH
0090	1732956	1	V-BELT, HA 118.00 LG A-Wedge Aramid
0100	1733577BM	1	SUPPORT, Brace
0110	80002729	2	NUT, 3/8-16 Hex Flange Lock, GR F, BZ (Was 1931211)
0120	7300569BM	1	BRACKET, Idler, 42" Deck
0130	80003641	2	NUT, 5/16-18 Hex Flange Lock, Large, Black (Was 1927557)
0140	1734243BM	1	ARM, Idler
0150	7016719	1	SPACER, .750 OD x.390 ID x .50 Long
0160	7301201BM	1	BELT GUIDE, Idler, 42" deck
0170	1736540	2	PULLEY, Idler
0180	7091560	2	SCREW, 3/8-16 x 2-1/4" Hex Head Cap, GR 5, YZ
0190	7090122	2	WASHER, 3/8" Flat (SAE) YZ
0200	1960534	1	WASHER, 3/8" Flat (0.41 ID x 1.50 OD x .25 Thick) Black
0210	1714255	1	SPACER, .406 ID x 1.50 OD x .350 Thick, PM
0220	7031079	1	WASHER, Thrust
0230	1733844	1	SPRING, Extension
0240	7301172BM	1	BRACKET, Support, Deck, Rear, 42", RH
0250	7301171BM	1	BRACKET, Gage Wheel, Rear, RH, 42"
0260	1731402BM	1	SUPPORT, Gage Wheel, RH
0270	80003525	1	WASHER, .34 ID x 1" OD x .13 Thick, Flat, Black (Was 1919381)
0280	7301170BM	1	BRACKET, Hanger, Front, 42"
0290	80003731	1	BOLT, 5/16-18 x 1-3/4" Round Head Short Square Neck, GR 5 (Was 1931338)
0300	721083BM	2	PLATE, Rear
0310	7091775	1	WASHER, Flat, Special, .531 x 2.5 x .135, YZ
0320	80003621	1	WASHER, 3/8" Flat (.41 ID x .87 OD) (Was 1924940)
0330	7091591	1	BOLT, 5/16-18 x 1" Hex Flange Lock, GR 5, YZ
0340	1732258BM	1	BRACKET, Gage Wheel, Front, LH
0350	1931334	1	BOLT, 5/16-18 x 7/8" Round Head Short Square Neck, GR 5, Black
0360	1935048	1	NUT, 5/16-18 Hex Flange Two-Way Lk Ga

Footnotes:

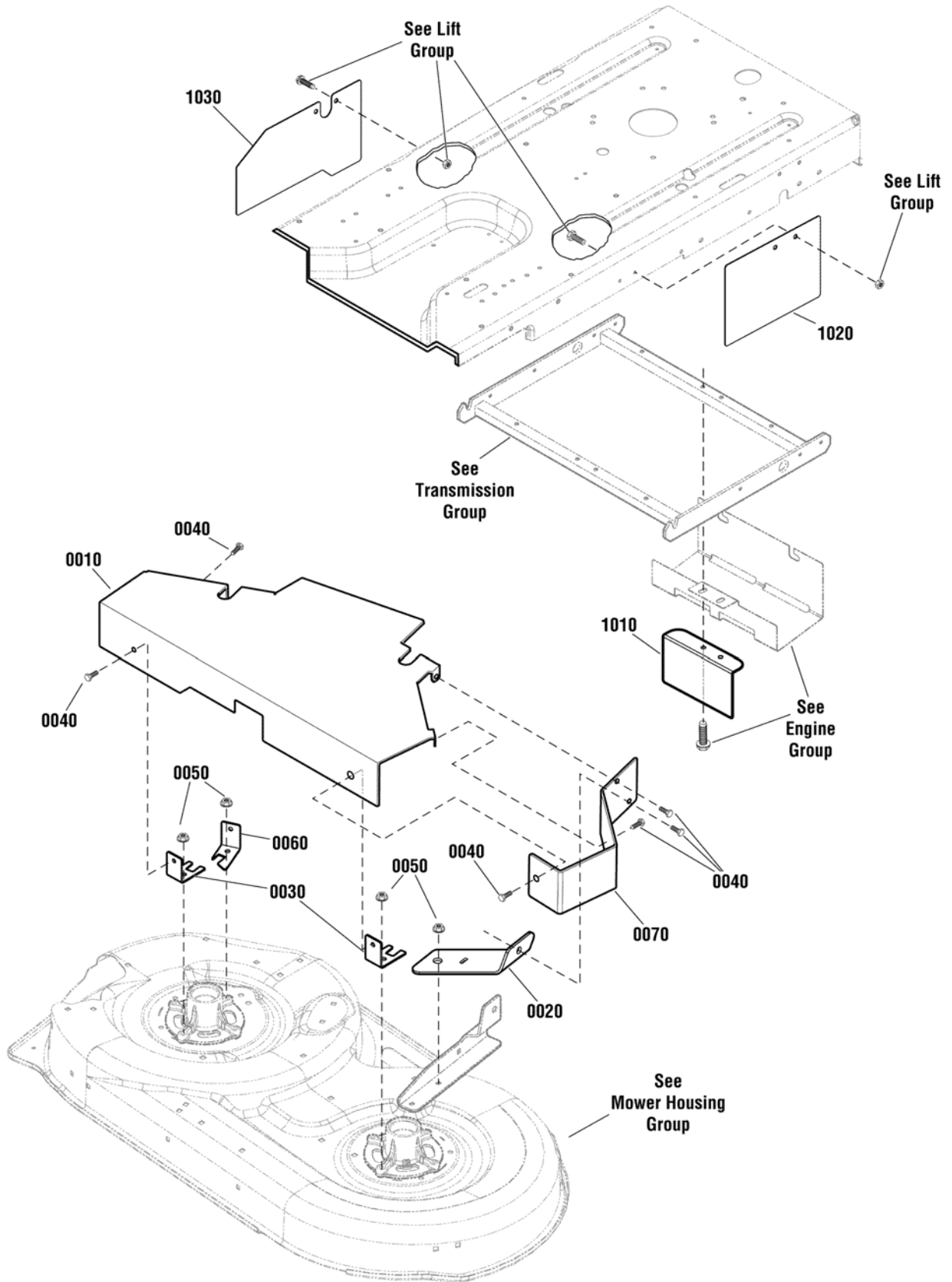


42" Deck Housing & Arbor Group, Export

Item	Part No	Qty	Description
0020	1920676	2	SCREW, 7/16-14 x 1 Hex Head Cap, GR 5, Black
0030	1656916	4	WASHER, 15/32 ID x 1-3/4 OD, .156, Spring, Thick, Black
0040	7091524	12	SCREW, 5/16-18 x 1-1/4 Hex Washer Head Self-Tap (Was 7091151)
0050	1752100	2	BLADE, 21.23" (42" Mower)
0060	1750458BM	1	PLATE, Spindle, LH Black
0070	7502226	2	ASSEMBLY, Spindle (Includes 0070-10, 0070-20, 0070-30, 0070-40, 0070-50, 0070-51, 0070-60)
0070-10	1735323	4	SHIELD, Arbor, 2-1/16 OD
0070-20	1735326	2	SHAFT, Spindle 20MM Dia. 134.60 MM Long
0070-30	1735328	4	SPACER, Bearing Powdered Metal
0070-40	1735399	4	BEARING, Ball, 20mm
0070-50	1735573	2	HOUSING, Spindle, Cast Aluminum (Machined) w/Grease Fitting
0070-51	1704314	2	LUBE FITTING, .250 Drive Type, Ball Check, Yel (Included with Ref. #0070-50)
0070-60	1960766	4	RING, Self Locking
0090	1737457	2	SPACER, Pulley, Yellow Zinc
0100	1737835	2	PULLEY, V, Deep Groove
0110	1918199	2	LOCKWASHER, 7/16", Spring, Black
0120	80003715	2	SCREW, 7/16-14 x 1-3/4 Hex Head Cap, GR 5, Black (Was 1923027)
0140	1736504D	1	HOUSING, 42" Mower, SNAPPER
0160	1750457BM	1	PLATE, Spindle, RH Black
0170	80003641	2	NUT, 5/16-18, Hex Flange Whiz-Lock, Zinc/Clear (Was 1927557)
0180	80004020	1	NUT, Push, 1/2" Cap Type, Zinc/Clear (Was 1960519)
0190	7104733	1	CHUTE, Discharge, Side, 38 / 42
0200	7104640	1	ROD, Pivot, Chute, Discharge
0210	7035813	1	SPRING, Torsion (Side Chute)
0220	7301176BM	1	BRACKET, Hinge, Black

Footnotes:

French Guard Group - Frame & 42" Deck

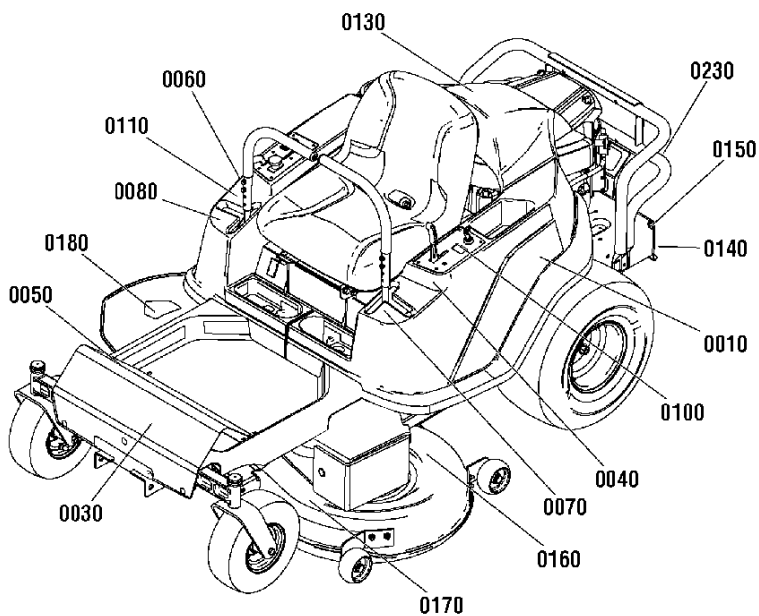


French Guard Group - Frame & 42" Deck

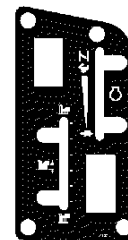
Item	Part No	Qty	Description
0010	1753699BM	1	COVER, 42" ZT French Guarding
0020	1753698BM	1	BRACKET, Support, 42" French Guarding
0030	1736518BM	3	BRACKET, Cover, Belt, Front
0040	1930601	6	SCREW, 5/16-18 x 5/8, Hex Washer Head Taptite, Blk
0050	80002728	3	NUT, 5/16-18, Hex Flange Lock, GR 5, Zinc/Clear (Was 1931277)
0060	1753670BM	1	BRACKET, Cover, Belt, Rear
0070	1753697BM	1	PLATE, 42" ZT French Guard, Side
1010	1753457BM	1	GUARD, French Guarding, Rear
1020	1753459BM	1	GUARD, Side Plate, LH
1030	1753460BM	1	GUARD, Side Plate, RH

Footnotes:

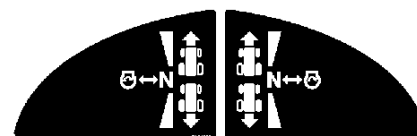
2990159



0100

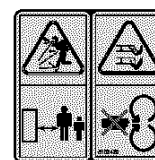


0110

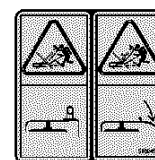


0070

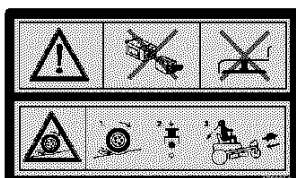
0080



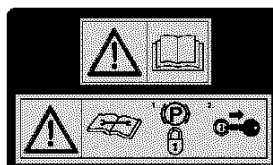
0170



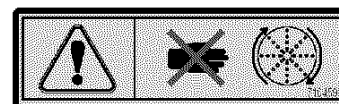
0180



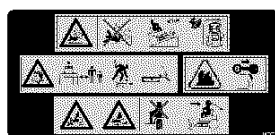
0040



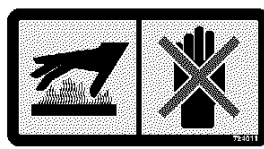
0060



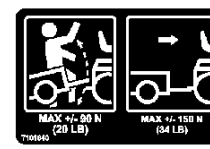
0130



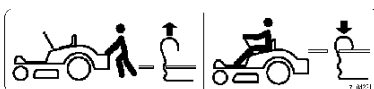
0050



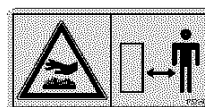
0230



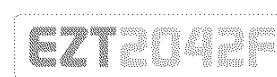
0150



0090



0140



0020



0160



0010



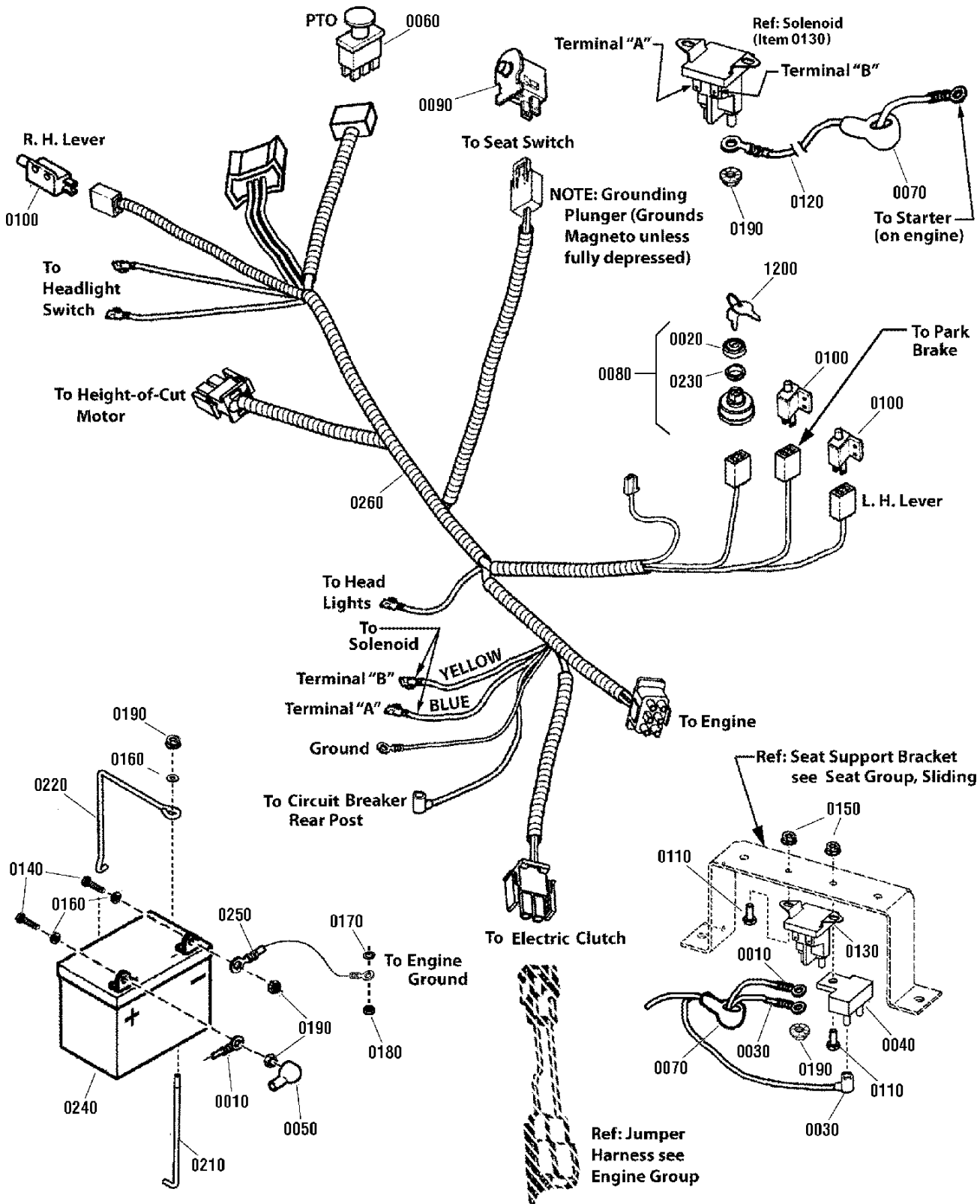
0120



0030

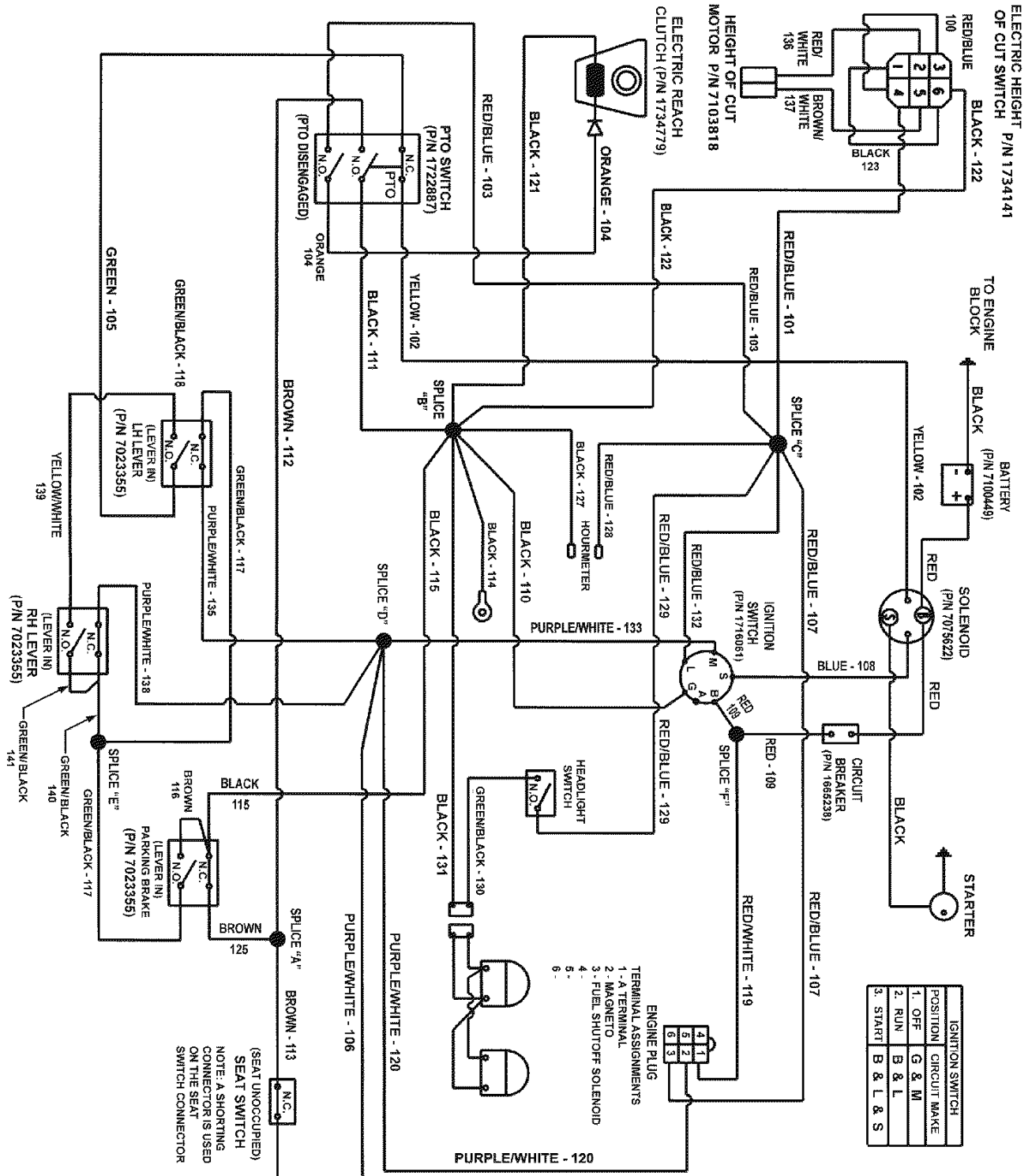
Item	Part No	Qty	Description
0010	1753405	1	DECAL, Fender, Snapper, LH
0020	1753468	1	DECAL, Model, EZT2042F
0030	7104148	2	DECAL, Snapper
0040	1753386	1	DECAL, Warning, LH
0050	1753388	1	DECAL, Danger, CE
0060	1753387	1	DECAL, Warning, RH
0070	7104226	1	DECAL, Handle, Ground Speed, LH
0080	7104227	1	DECAL, Handle, Ground Speed, RH
0090	7104231	2	DECAL, Release, Transaxle
0100	7104232	1	DECAL, Panel, Control, LH
0110	7104233	1	DECAL, Panel, Control, RH
0120	1753406	1	DECAL, Fender, Snapper, RH
0130	7104597	1	DECAL, Screen, Rotating
0140	1753350	1	DECAL, Hot Exhaust
0150	7101940	1	DECAL, Weight Limitation
0160	1753467	1	DECAL, Deck, 107CM
0170	5102420	2	DECAL, Danger, Mower Deck
0180	5102457	1	DECAL, Danger Discharge
0230	724011	1	DECAL, Heat Shield Warning

Footnotes:



Item	Part No	Qty	Description
0010	720348	1	CABLE, Battery, 8 Gauge, Red, 18", 1/4" Terminals
0020	727338	1	CAP, Ignition Switch
0030	1665237	1	WIRE, Red, 12GA, 8"
0040	1665238	1	BREAKER, Circuit, 12Volt, 20 AMPS W/Tab
0050	1677296	1	BOOT, Insulator Battery Terminal PVC Red
0060	1722887	1	SWITCH, PTO Push
0070	1724588	1	COVER, Terminal Red Vinyl
0080	1737853	1	SWITCH ASSEMBLY, Ignition, No Keys/Hdwe.
0090	7023354	1	SWITCH, Seat
0100	7023355	3	SWITCH, DPDT
0110	80002437	2	SCREW, Hex Head Cap, 1/4-20 X 0.625, GR5, Zinc/Clear
0120	7042956	1	CABLE, Battery, 8 Gauge, Black, 14", 1/4" Terminals
0130	7075622	1	SOLENOID, Super Trombetta, 2 Terminal
0140	80002437	2	SCREW, Hex Head Cap, 1/4-20 X 0.625, GR5, Zinc/Clear
0150	7090372	2	NUT, Hex Cap Lock, 1/4C GR5 BZ
0160	80002742	3	WASHER, Flat, 1/4", Zinc/Clear
0170	7091315	1	WASHER, Split Lock, .32X.58X.08 YZ
0180	80002725	1	NUT, 5/16-18, GR5, Zinc/Clear
0190	7091584	5	NUT, Hex Flange Lock, 1/4C YZ
0210	7100308	1	HOLD DOWN ROD, Battery, 1/4" x 7", 1/4-20 UNC-2A
0220	7100309	1	BRACKET, Battery
0230	7100329	1	NUT, 5/8-32, ES
0240	7060618	1	BATTERY, 12 Volt, 230 CCA
0250	7100636	1	CABLE, Battery, 8 Gauge, Black, 20", 1/4" & 5/16" Terminals
0260	7103412	1	HARNESS, Wiring, RZT
1200	1737837	1	KEYS, Blister Pk (KIDS+MWRS DON'T MIX) English/French (set of two, one coated)

Footnotes:



Item	Part No	Qty	Description
1	7103412	1	HARNESS, Wiring, RZT

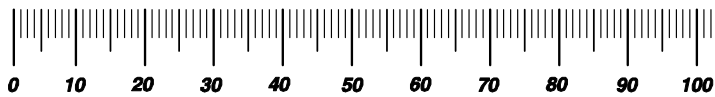
Footnotes:

Hardware Identification & Torque Specifications

Torque Specification Chart								
FOR STANDARD METRIC MACHINE HARDWARE (Tolerance ± 20%)								
Property Class	5.6		8.8		10.9		12.9	
	Class 5.6		Class 8.8		Class 10.9		Class 12.9	
Size Of Hardware	in/lbs		in/lbs		in/lbs		in/lbs	
	ft/lbs	Nm.	ft/lbs	Nm.	ft/lbs	Nm.	ft/lbs	Nm.
M3	5.88	.56	13.44	1.28	19.2	1.80	22.92	2.15
M4	13.44	1.28	30.72	2.90	43.44	4.10	52.56	4.95
M5	26.4	2.50	60.96	5.75	5.97	8.10	7.15	9.7
M6	44.64	4.3	7.3	9.9	10.3	14	12.1	16.5
M7	5.2	7.1	12.1	16.5	16.9	23	19.9	27
M8	7.7	10.5	17.7	24	25	34	29	40
M10	15	21	35	48	50	67	59	81
M12	26	36	61	83	86.2	117	103	140
M14	42	58	101	132	136	185	162	220
M16	64	88	147	200	210	285	250	340
M18	89	121	202	275	287	390	346	470
M20	126	171	290	390	405	550	486	660
M22	169	230	390	530	559	745	656	890
M24	217	295	497	375	708	960	840	1140
M27	320	435	733	995	1032	1400	1239	1680
M30	435	590	995	1350	1401	1900	1681	2280
M33	590	800	1349	1830	1902	2580	2278	3090
M36	759	1030	1740	2360	2441	3310	2935	3980
M39	988	1340	2249	3050	3163	4290	3798	5150

Torque Specification Chart						
FOR STANDARD MACHINE HARDWARE (Tolerance ± 20%)						
Hardware Grade	No Marks		SAE Grade 5		SAE Grade 8	
	SAE Grade 2		SAE Grade 5		SAE Grade 8	
Size Of Hardware	in/lbs		in/lbs		in/lbs	
	ft/lbs	Nm.	ft/lbs	Nm.	ft/lbs	Nm.
8-32	19	2.1	30	3.4	41	4.6
8-36	20	2.3	31	3.5	43	4.9
10-24	27	3.1	43	4.9	60	6.8
10-32	31	3.5	49	5.5	68	7.7
1/4-20	66	7.6	8	10.9	12	16.3
1/4-28	76	8.6	10	13.6	14	19.0
5/16-18	11	15.0	17	23.1	25	34.0
5/16-24	12	16.3	19	25.8	29	34.0
3/8-16	20	27.2	30	40.8	45	61.2
3/8-24	23	31.3	35	47.6	50	68.0
7/16-14	30	40.8	50	68.0	70	95.2
7/16-20	35	47.6	55	74.8	80	108.8
1/2-13	50	68.0	75	102.0	110	149.6
1/2-20	55	74.8	90	122.4	120	163.2
9/16-12	65	88.4	110	149.6	150	204.0
9/16-18	75	102.0	120	163.2	170	231.2
5/8-11	90	122.4	150	204.0	220	299.2
5/8-18	100	136	180	244.8	240	326.4
3/4-10	160	217.6	260	353.6	386	525.0
3/4-16	180	244.8	300	408.0	420	571.2
7/8-9	140	190.4	400	544.0	600	816.0
7/8-14	155	210.8	440	598.4	660	897.6
1-8	220	299.2	580	788.8	900	1,244.0
1-12	240	326.4	640	870.4	1,000	1,360.0

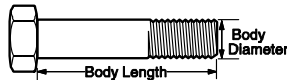
The guides and ruler furnished below are designed to help you select the appropriate hardware.



Nut, M8

Thread Diameter (mm)
Inside Diameter (in) Threads per inch

Nut, 1/2-16



Screw, M8- 1.25 x 25

Thread Diameter (mm) Distance between threads (mm) Body Length (mm)
Body Diameter Threads per inch Body Length (in)

Screw, 1/2- 16 x 2



Standard Hardware Sizing

When a washer or nut is identified as 1/2" (M8), this is the *Nominal size*, meaning the *inside diameter* is 1/2 inch (8mm metric thread diameter); if a second number is present it represents the *threads per inch* (distance between threads).

When bolt or capscrew is identified as 1/2 - 16 x 2" (M8 - 1.25 x 50), this means the *Nominal size*, or body diameter is 1/2 inch (8mm metric thread diameter), the second number, 16, represents the *threads per inch*, (1.25 thread diameter). The final number is the body length of the bolt or screw, 2 inches (50mm).

NOTES

- These torque values are to be used for all hardware excluding: locknuts, self-tapping screws, thread forming screws, sheet metal screws and socket head setscrews.
- Recommended seating torque values for locknuts:
 - for prevailing torque locknuts - use 65% of grade 5 torques.
 - for flange whizlock nuts and screws - use 135% of grade 5 torques.
- Unless otherwise noted on assembly drawings, all torque values must meet this specification.

Common Hardware Types

Hex Head Capscrew



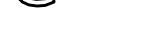
Washer



Carriage Bolt



Lockwasher



Hex Nut



Wrench & Fastener Size Guide

1/4" Bolt or Nut Wrench—7/16"	5/16" Bolt or Nut Wrench—1/2"	3/8" Bolt or Nut Wrench—9/16"	7/16" Bolt or Nut Wrench (Bolt)—5/8" Wrench (Nut)—11/16"	1/2" Bolt or Nut Wrench—3/4"
M6 Bolt or Nut Wrench—10mm	M8 Bolt or Nut Wrench—13mm	M10 Bolt or Nut Wrench—17mm	M12 Bolt or Nut Wrench—19mm	M14 Bolt or Nut Wrench—22mm

Parts Manual for

SNAPPER®

**EUROPEAN HYDRO DRIVE ZTR
42" (106.7 cm)
285Z**

IT IS THE POLICY OF BRIGGS & STRATTON CORP TO IMPROVE ITS PRODUCTS WHENEVER IT IS POSSIBLE AND PRACTICAL TO DO SO. WE RESERVE THE RIGHT TO MAKE CHANGES OR ADD IMPROVEMENTS AT ANY TIME WITHOUT INCURRING ANY OBLIGATION TO MAKE SUCH CHANGES ON PRODUCTS

Briggs & Stratton Yard Power Products Group

535 Macon Road
McDonough, GA, 30253 U.S.A.
800-935-2967

www.snapper.com

Copyright © 2012 Briggs & Stratton Corporation
Milwaukee, WI USA. All Rights Reserved

Manual No. 7105980
Revision: - 9/11/2012



YVAN BÉAL - ZAC des Ribes - 27 rue des frères Montgolfier - CS 20024 - Aubière Cedex
Tél. : 04 73 91 93 51 / Fax : 04 73 90 23 11 / E-mail : info@yvanbeal.fr / Web : www.yvanbeal.fr